

## OPTIMAL PRICING AND GRANT POLICIES FOR MUSEUMS

Autores: *Juan Prieto Rodríguez*<sup>(a)</sup>

Instituto de Estudios Fiscales & Universidad de Oviedo

*Víctor Fernández Blanco*<sup>(b)</sup>

Universidad de Oviedo

P. T. N.º 3/02

(a) Instituto de Estudios Fiscales. Avenida Cardenal Herrera Oria, 378. 28035 Madrid, Spain. Phone: 34 91339877. Email: [juan.prieto@ief.minhac.es](mailto:juan.prieto@ief.minhac.es).

(b) Departamento de Economía. Universidad de Oviedo. Avenida del Cristo, s/n. 33071 Oviedo, Spain. Phone: 34 985103770. Fax: 34 985230789. Email: [vfernann@econo.uniovi.es](mailto:vfernann@econo.uniovi.es).

N.B.: Las opiniones expresadas en este trabajo son de la exclusiva responsabilidad de los autores, pudiendo no coincidir con las del Instituto de Estudios Fiscales.

Desde el año 1998, la colección de Papeles de Trabajo del Instituto de Estudios Fiscales está disponible en versión electrónica, en la dirección: ><http://www.minhac.es/ief/principal.htm>.

Edita: Instituto de Estudios Fiscales

N.I.P.O.: 111-02-004-2

I.S.S.N.: 1578-0252

Depósito Legal: M-23772-2001

## ÍNDICE

1. INTRODUCTION
2. PRINCIPAL-AGENT MODELS
3. THE OPTIMAL CONTRACT UNDER SYMMETRIC INFORMATION
  - a) The optimal grant mechanism
  - b) Optimal ticket price
  - c) Optimal effort level
4. THE OPTIMAL CONTRACT UNDER ASYMMETRIC INFORMATION
  - a) Optimal grant mechanism
  - b) Optimal ticket price
5. CONCLUSIONS



## ABSTRACT

Considering two potential sources of income (public grants and ticket revenues), we have defined a theoretical model where the public agency is the principal and the manager of the museum is the agent. This model allows us to design the optimal contract between both sides and thus to establish the optimal values of grants, ticket prices, budget and effort applied by the manager. Furthermore, we have found a theoretical reason to explain the inelastic pricing strategy that has been found in some of the empirical research on cultural and sports economics.

The main conclusion is that the optimal contract allows a Pareto optimum solution in prices that does not change if we introduce moral hazard into this relationship. This solution allows us to conclude that the public agency should regulate ticket prices in accordance with the social valuation. However, public grants and museum budgets would be affected by the existence of this problem, moving the equilibrium away from the Pareto optimum situation. In this case, even with a risk averse manager and a risk neutral public agency, grants and budgets will depend on results because higher budgets related to good results provide the main incentives to increase the manager's level of effort.

Although the focus of this paper is on museum administration, the model that we have developed can be easily generalized and applied to other institutions, such as schools, sport facilities or NGOs, which are able to raise funds directly from private (e. g. ticket revenues or membership fees) or public sources (e.g. public grants).

**JEL Classification number:** C70, D80, H20, H42, Z10.



## 1. INTRODUCTION

Over recent years, the economics of museums has experienced remarkable development (Johnson and Thomas, 1998) and the problem of funding has been one of its most important issues. In this area, two main strands stand out, namely the impact of charges and the public funding of museums. In the first case, the advantages and disadvantages of charging have been much discussed. Anderson (1998) defends free entry while O'Hagan (1995) and Bailey and Falconer (1998) provide some arguments in favour of a charging policy. Frey (1994) defends a price discrimination policy. Moreover, O'Hagan (1995) and Luksetich and Partridge (1997) analyse the impact of admission charges on access. They conclude that, in general, museum demand is price-inelastic, so access is weakly responsive to increases on admissions charges.

On the other hand, Duffy (1992) provides some specific reasons to defend public funding<sup>1</sup>. In this field some research has been oriented towards determining the optimal quantity of grants, using the social valuation of museums (Asworth and Johnson, 1996; Barros, 1997; Santagata y Signorelli, 1998). Other studies have defined the instruments and procedures that public agencies have used to assign public aid to different kinds of institutions (Schuster, 1989; O'Hagan, 1998; Heilbrun and Gray, 2001). Both approaches have a common methodological assumption: the relations between the public agency and the manager of the museum are framed within an environment of certainty. However, from our point of view these relations can be considered in a framework of uncertainty, using principal-agent models as a methodological approach. These models permit the design of optimal contracts under conditions of imperfect information, and this is the aim of this paper.

Thus, we present a theoretical principal-agent model where the public agency, which is risk-neutral, plays the role of the principal, and the manager of the museum, who is risk-averse, plays the role of the agent. As a starting point, the model is developed under symmetric information; that is to say, the principal and the agent have the same information and the former knows and is able to control the effort made by the latter. Next, we relax these assumptions and discuss the model under asymmetric information. In both cases, we assume that the museum operates with zero marginal costs<sup>2</sup>.

We also try to provide an answer to another question outstanding in cultural economics<sup>3</sup>: why are museums located on the inelastic segment of the demand

---

<sup>1</sup> Beyond the economics of museums, Schuster (1989), Fullerton (1991), Netzer (1992) or Baumol (1997) analyse the determinants of grants to culture.

<sup>2</sup> This assumption is quite common in the economics of museums, although it is questionable (Bailey and Falconer, 1998).

<sup>3</sup> This is also an important issue in sports economics. See for instance Noll (1974) for an empirical study and Salant (1992) for theoretical work on pricing policy in this field.



curve? (for performing arts, see Heilbrun and Gray, 2001, pp. 99-104; and for museums, Luksetich and Partridge, 1997 and Bailey and Falconer, 1998,). Being located on the inelastic section of the demand curve causes a theoretical problem, since the economic behaviour of a profit-maximizing firm should be to increase prices in order to maximise revenues and profits. However, this is not the observed behaviour of museums. There are some alternative explanations for this contradiction. First, the ticket price is a relatively small proportion of the total effective visiting cost of museums (which includes, for instance, transportation costs) with the consequence that, although the ticket price elasticity could be small, demand is effectively price elastic. Second, the inelastic pricing strategy to maximize profits is appropriate when the firm receives revenues from other complementary goods (Marburger, 1997). Finally, the museum can follow an objective other than profit-maximisation; for example, it can accept a compromise between profits (or revenues) and number of visitors (Darnell, 1998). Our paper can therefore be thought of as providing theoretical foundations for inelastic pricing as an optimal strategy when there is a public agency which cares about the number of visitors and which provides a grant to complement the museum revenues.

The paper is organised as follows. In Section 2 we summarise the stylised characteristics of the principal-agent approach. Section 3 develops our theoretical model with symmetric information; Section 4 describes the new equilibrium when the manager can hide his effort to the public agency (moral hazard). Finally, in Section 5 we present the main conclusions of this paper.

## 2. PRINCIPAL-AGENT MODELS

Principal-agent models can be applied to any bilateral relationship, or contract, where one of the participants, called the agent, carries out an action that provides some benefit to the other participant, called the principal. The principal designs a contract that ties him to the agent and which sets down what payments correspond to each possible result. The agent chooses his action among a set  $\{E\}$  of possible actions. The results of this action depend on the agent's efforts and on some non-controllable environmental conditions, usually denominated the "state of nature", which imposes uncertainty on the relationship.

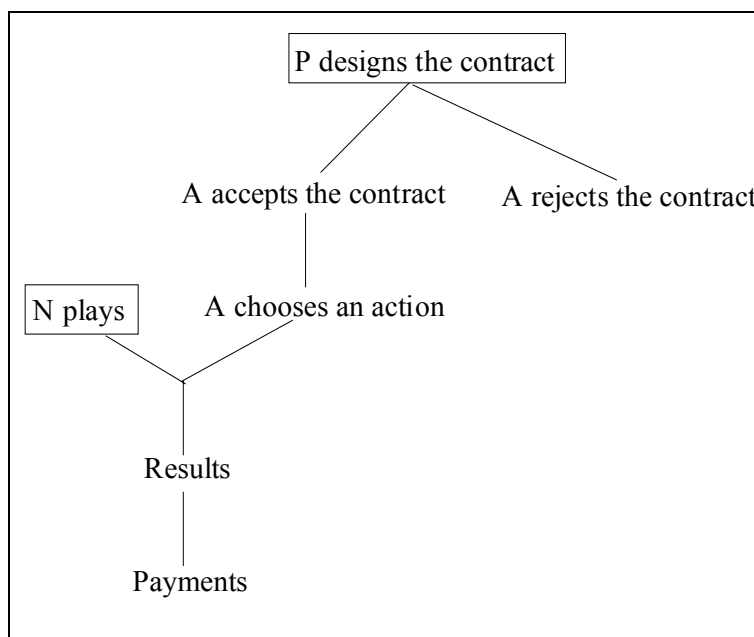
The main purpose of principal-agent theory is to characterise the optimal contracts under diverse assumptions about the information available to the principal and the agent. A contract can be defined as a credible commitment for both parties, which specifies the obligations of each party and all the possible contingencies of the relationship. That is to say, it should establish the mechanism of payments to remunerate the agent under different circumstances. Moreover, these payments

should be a function of verifiable and measurable variables, known by both participants or by a third party that can guarantee the fulfilment of the contract (i.e. a court). If the contract is based on non-verifiable variables, arbitration is impossible and both parties will have incentives to violate the agreements. Foreseeing this behaviour, nobody will therefore be willing to sign non-verifiable contracts.

As the principal is responsible for designing the contract, he will choose those terms that allow him to reach his objectives at the lowest possible cost and to try to correct for, as much as possible, the problems that will be present in his relationship with the agent. The terms of the contract must be, in turn, beneficial for the agent because otherwise he would not sign it. In short, the utility of not signing the contract, denominated the reservation utility,  $\underline{U}$ , should be equal to or smaller than the utility of signing and accepting the terms of the contract. Figure 1 summarises the temporal development of this game.

The development of the relationship is as follows. First, the principal (**P**) designs the contract. Second, the agent (**A**) decides whether or not to accept it. Third, the agent chooses which action to take i.e. he decides the level of effort he chooses to put in to carry out the task for which he has been hired by the principal. Simultaneously, the state of nature –a set of non-controllable environmental variables (**N**)– comes into play; that is to say, these variables will influence the development of the relationship between the principal and the agent. Consequently, the actual outcome of the relationship between the principal and the agent will depend on the level of effort chosen by the agent and on a random variable that represents the state of the nature faced by the agent, and therefore the result will also be a random variable. Finally, the agent will receive some payment in exchange for his effort.

Figure 1





When we apply this model to museum management, the results can be defined as the number of museum visitors,  $n_i$ , which is a discrete variable going from zero to the congestion level,  $N$ . The probability of getting a certain number of visitors,  $n_i$ , will be denoted as  $p_i(e)$  and is always strictly greater than zero. Since this condition makes any result possible, whatever the agent's effort,  $e$ , it ensures that the principal can not infer the effort of the agent by observing a certain result. However, it is assumed that the greater the effort, the higher the probability of obtaining good results and, consequently, the lower the probability of them being bad<sup>4</sup>. We will assume as well that the expected number of visitors will increase at a decreasing rate with effort. In other words, there is a limit to the expected number of visitors that can be achieved by intensifying the effort.

Given that one of the main characteristics of these models is the existence of uncertainty, we will assume that the objective functions of the principal and the agent are Von Neumann-Morgenstern functions. We will assume that the principal wants to maximize a profit function that includes as arguments the number of visitors,  $n_i$ , and the grant to the museum,  $s$ , which can depend on the number of visitors. We will denote this function as  $B[\theta n_i - s(n_i)]$ , where  $B' > 0$  y  $B'' \leq 0$ . The concavity of  $B$  implies that the principal can be neutral or risk averse. In our case, we assume that the public sector (the principal) is risk neutral, so  $B'' = 0$ .  $\theta$  is a positive constant that represents the public sector's subjective valuation of any visitor<sup>5</sup>.

The museum manager's behaviour can be considered within the terms of a bureaucratic model (Niskanen 1968). Following this author, a bureau has the following critical characteristics:

- It is a non-profit organization.
- It exchanges a specific output for a specific budget.
- The bureaucrat maximizes his utility.

According to Niskanen (1968, pp. 293-294), the bureaucrat's utility function depends on "salary, perquisites of the office, public reputation, power patronage, ease of managing the bureau and ease of making changes. All these variables (...) are positive, monotonic functions of the total budget of the bureau". Hence, we will consider the arguments of the agent utility function to be the

---

<sup>4</sup> If this assumption does not hold then the principal and the agent would always agree on the minimum effort since greater effort would not imply better expected results, rather a lower utility to the agent. In this case, the minimum effort would assure the best expected result and the payments to compensate the effort would be relatively low. Thus, the principal would obtain the highest profits in expected terms.

<sup>5</sup> A declining  $\theta$  could represent decreasing marginal utility of visitors, even for a risk neutral principal. If the public sector had different valuations for different visitors,  $\theta$  would vary with the visitors' characteristics. This assumption could be used to analyse a special case of discrimination.

museum budget and the effort put in ( $e$ ). The budget includes ticket income,  $n_i t$  –where  $t$  is the ticket price– and the grant,  $s(n_i)$ . For simplicity, we will assume that the utility function is additively separable and we will denote it as  $U [n_i t + s(n_i), e] = u[n_i t + s(n_i)] - v(e)$ , where  $u' > 0$ ,  $u'' \leq 0$ ,  $v' > 0$  y  $v'' \geq 0$ .

These objective functions tell us that there are conflict of interests between the principal and the agent. On the one hand, greater levels of effort will help to assure a better result for the principal but will reduce the agent's utility. On the other hand, bigger payments will reduce the principal's profit but will increase the agent's utility. The terms of the contract will match (i.e., serve to make compatible) the interests of both participants.

### 3. THE OPTIMAL CONTRACT UNDER SYMMETRIC INFORMATION

In this section we develop a model where both participants have the same, but imperfect, information. Therefore, the public sector (principal) knows the effort put in by the museum manager (agent). Under this assumption, effort must be included in the contract clauses.

When designing the contract, the principal will try to maximise his expected profit under the restriction that the agent agrees to sign the contract. With symmetric information, the principal will be able to design a contract, acceptable to the agent, in which the effort demanded by the agent is specified. When the result is a discrete random variable, the following constrained maximisation program can represent principal's problem:

$$\begin{aligned} \text{Max}_{e, s(n_i), t_{i=0,1,2,\dots,N}} \quad & \sum_{i=0}^N p_i(e) B [\theta_{n_i} - s(n_i)] \\ \text{s.t.} \quad & \sum_{i=0}^N p_i(e) u [n_i t + s(n_i)] - v(e) \geq \underline{U} \end{aligned} \quad [1]$$

The restriction is known as the participation restriction and implies that the principal should take into consideration the contracts that the agent is willing to sign, given the level of effort that will be demanded.

The characteristics of an efficient contract can be found by solving this maximisation program. Moreover, with symmetric information the principal can, at the beginning of the relationship, determine the effort level compatible with his maximum expected profit, and the agent will not be able to hide this from him. Also, the contract can include clauses that give the agent incentives to put in this level of effort.

The solution to this problem will be a Pareto optimum. Since the principal tries to maximise his profit by giving the agent the minimum needed to accept

the contract,  $\underline{U}$ , at the maximum of the program [1] he/she will not be able to improve without the agent losing utility, and vice versa.

The Lagrange function associated with this problem is:

$$L(s(n_i), t, \lambda) = \sum_{i=0}^N p_i(e) B[\theta n_i - s(n_i)] + \lambda \left[ \sum_{i=0}^N p_i(e) u(n_i t + s(n_i)) - v(e) - \underline{U} \right] \quad [2]$$

with the control variables being the level of effort,  $e$ ; the ticket price,  $t$ ; and the grant,  $s(n_i)$ .

The first order conditions of this programme are:

$$\frac{\partial L}{\partial s(n_i)} = -p_i(e) B'(\theta n_i - s(n_i)) + \lambda p_i(e) u'(n_i t + s(n_i)) = 0 \quad \forall i \in \{0, 1, 2, \dots, N\} \quad [3]$$

$$\frac{\partial L}{\partial t} = \sum_{i=0}^N p_i(e) B' \left[ \frac{\partial n_i}{\partial t} \left( \theta - \frac{\partial s}{\partial n_i} \right) \right] + \sum_{i=0}^N p_i(e) \lambda u' \left[ n_i + \frac{\partial n_i}{\partial t} \left( t + \frac{\partial s}{\partial n_i} \right) \right] = 0 \quad [4]$$

$$\frac{\partial L}{\partial e} = \sum_{i=1}^N p'_i(e) B(\theta n_i - s(n_i)) + \lambda \left[ \sum_{i=1}^N p'_i(e) u(n_i t + s(n_i)) - v'(e) \right] = 0 \quad [5]$$

We now analyse these conditions. First, we analyse the optimal grant under symmetric information; second, we derive the optimal ticket price; and finally, we obtain the optimal level of effort.

### a) The optimal grant mechanism

From the first of these conditions it can be observed that:

$$\frac{B'(\theta n_i - s(n_i))}{u'(n_i t + s(n_i))} = \lambda \quad \forall i \in \{0, 1, 2, \dots, N\} \quad [6]$$

This necessary condition implies that the ratio between the principal's marginal profit and the agent's marginal utility of income should equal the Lagrange multiplier for each of the possible results. Since  $B'$  and  $u'$  are always positive,  $\lambda$  will be strictly positive at the optimum, implying that the participation restriction is a binding constraint and the museum manager will get his reservation utility,  $\underline{U}$ , when he accepts the contract.  $\lambda$  can be interpreted as a shadow price which shows the value of a unit of the manager's additional utility in terms of public sector utility, that is to say, the exchange relationship among the units of utility–income– of the principal and the agent.

As this first order condition has to be fulfilled whatever the number of visitors, if the principal is risk neutral ( $B'$  being a positive constant) the manager's marginal utility of income has to be the same at the optimum for any possible result. However, if the agent is risk averse  $u'$  will be decreasing with income, so the budget has to be constant and independent of the number of visitors. In terms of our problem, this implies that the public agency (principal) has to fully

insure the manager (i.e. the public agency has to fully guarantee the museum's budget). That means, allocating him a subsidy that, given the optimal level of effort, allows the museum manager to obtain his reserve level of utility,  $\underline{U}$ . Hence, the subsidy has to be equal to:

$$s = u^{-1} [\underline{U} + v(e)] - n_i t \quad [7]$$

which will depend negatively on the number of visitors and will decrease with the box office income<sup>6</sup>. This solution implies that the public sector has to cover the shortfall in the museum budget in that it is not fully covered by ticket sales. It can be observed that if the museum has enough ticket income to obtain the required budget, then it will not have any subsidy and the subsidy may even be negative, the latter implying that the museum is a positive source of finance for the public sector<sup>7</sup>.

Condition [6] implies a Pareto-optimal allocation. For this to be achieved, the public agency and the manager should have the same information set (which includes the probability of obtaining the different results) when they sign the contract, and the manager should be able to require the manager to give his optimum effort. Under these conditions, the public agency has to compensate for the museum deficit but we will not observe a cost inflation process, as is the case for some festivals (Frey and Pommerehne, 1989).

## b) Optimal ticket price

Using the equilibrium value of  $\lambda$  in equation [6] we can transform equation [4] as follows:

---

<sup>6</sup> When the museum budget is independent of results, a new visitor will decrease the optimal grant by the amount of the ticket price.

$$\frac{\partial(tn_i + s(n_i))}{\partial n_i} = t + \frac{\partial s(n_i)}{\partial n_i} = 0 \Rightarrow \frac{\partial s(n_i)}{\partial n_i} = -t$$

<sup>7</sup> When the manager is risk neutral, all the payments that imply a similar expected budget for the museum would generate the same utility for its manager and  $u'$  would be constant. In this case, the manager will agree to fully insure the public agency, in the sense that its net profits,  $\theta n_i - s(n_i)$ , will be independent of the number of visitors. However, the optimum contract will not imply a constant subsidy. Since  $\theta n_i - s(n_i)$  has to be constant, it can be observed that, if there is a visitor more, the grant will increase in the amount of his/her subjective valuation ( $\theta$ ).

With both parties risk neutral there will not be an unique equilibrium. Any payment scheme that gave a museum the expected budget and yielded the reservation utility to its manager (and assured that the participation condition was satisfied) would be a possible equilibrium. Obviously, this set includes the solution represented by equation [7]. In conclusion, with symmetric information the optimal revenue and risk allocation depends on the degree of risk aversion of both participants.

$$\sum_{i=0}^N p_i(e) B' \left[ \frac{\partial n_i}{\partial t} \left( \theta - \frac{\partial s}{\partial n_i} \right) \right] + \sum_{i=0}^N p_i(e) \frac{B'}{u'} \left[ n_i + \frac{\partial n_i}{\partial t} \left( t + \frac{\partial s}{\partial n_i} \right) \right] = 0 \quad [8]$$

If the public agency is risk neutral, it is possible to get:

$$E \left[ \left( n_i + \frac{\partial n_i}{\partial t} t \right) + \frac{\partial n_i}{\partial t} \theta \right] = 0 \quad [9]$$

This implies that, with respect to  $t$ , the expected marginal social profit (expected marginal revenue plus the expected marginal social value) has to be equal to the marginal cost, in this case zero. Hence, the optimal ticket price obtained from this principal-agent model corresponds to a Pareto optimum equilibrium.

Equation [9] can be easily expressed in terms of the expected demand elasticity when we consider a linear demand function:

$$\begin{aligned} E[n_i] + \frac{\partial n_i}{\partial t} (t + \theta) = 0 &\Rightarrow E[n_i] \left[ 1 + \frac{\partial n_i}{\partial t} \frac{t}{E[n_i]} \frac{(t + \theta)}{t} \right] = 0 \Rightarrow 1 + \frac{\partial n_i}{\partial t} \frac{t}{E[n_i]} \frac{(t + \theta)}{t} = 0 \Rightarrow \\ \Rightarrow \varepsilon_D \frac{(t + \theta)}{t} = 1 &\Rightarrow \varepsilon_D = \frac{t}{(t + \theta)} \end{aligned}$$

This implies that the demand elasticity will be equal to or less than one. Only when the public agency does not care about visitors ( $\theta = 0$ ), and its profit function only includes the subsidy, will the optimum be at the point where demand elasticity is unitary. This is also the necessary condition to maximise ticket revenues and, if public sector is risk neutral, to minimise the subsidy<sup>8</sup>.

### c) Optimal effort level

The first order condition with respect to effort (equation [5]) can be written as:

$$\sum_{i=1}^N p'_i(e) B(\theta n_i - s) + \lambda \left[ \sum_{i=1}^N p'_i(e) u(t n_i + s) \right] = \lambda v' \quad [10]$$

So, when the effort is optimum, the loss of utility due to an increase in effort must be equal to the increase in the expected utility of the public sector plus the increase in the manager's expected income utility<sup>9</sup>.

The optimal level of effort, subsidy and ticket price must be chosen at the beginning of the relationship, so this condition can be expressed in expected terms as:

$$E \left[ B' \frac{\partial(\theta n_i - s)}{\partial n_i} \frac{\partial n_i}{\partial e} \right] + \lambda E \left[ u' \frac{\partial(n_i t + s)}{\partial n_i} \frac{\partial n_i}{\partial e} \right] = \lambda v' \quad [11]$$

<sup>8</sup> If the public sector is risk averse and the manager is risk neutral then the optimal subsidy is constant when  $\theta$  is zero.

<sup>9</sup> The manager's utility terms are multiplied by  $\lambda$  to value them in terms of principal's utility.

Substituting  $\lambda$  for its equilibrium value (equation [6]), and rearranging terms:

$$E \left[ B' \frac{\partial (\theta n_i + t n_i)}{\partial n_i} \frac{\partial n_i}{\partial e} \right] = E \left[ B' (\theta + t) \frac{\partial n_i}{\partial e} \right] = \frac{B'}{u'} v' \quad [12]$$

Hence, this first order condition requires that the expected marginal revenue product of effort equals the marginal cost, where both are evaluated in terms of the principal's utility. This is clearly a Pareto-optimal equilibrium.

If the public sector is risk neutral and  $B'$  is therefore constant, equation [12] may be expressed as:

$$E \left[ \frac{\partial n_i}{\partial e} \right] (\theta + t) = \frac{v'}{u'} \quad [13]$$

Hence, at the equilibrium the expected marginal revenue product of effort has to be equal to the manager's marginal rate of substitution between budget and effort, which increases at an increasing rate since we have assumed that  $v'$  and  $v''$  are both positive. Since the participation condition has to be satisfied, the equilibrium will be the point that gives utility  $\underline{U}$  to the manager and fulfils the first order condition represented by equations [3], [4] and [5].

#### 4. THE OPTIMAL CONTRACT UNDER ASYMMETRIC INFORMATION

In this section we develop a model where the public sector (principal) does not know the effort put in by the museum manager (agent). Under this assumption, effort can not be included in the contract clauses. For simplicity, we will also assume that there are only two possible effort levels (high and low, denoted with superindexes H and L) and that the principal is interested only in the high effort. If the principal were interested in the low effort there would be no real incentive problem and he would simply offer the agent the symmetric information contract corresponding to this level of effort. As this is not the usual case, the principal will generally need to include a new restriction in order to maximize his expected revenue when designing the contract. The new restriction is known as the incentive constraint and it implies that the principal has to include a payment schedule in the contract which gives the agent sufficient incentives to choose the high effort level:

$$\sum_{i=0}^N p_i (e^H) u [n_i t + s(n_i)] - v(e^H) \geq \sum_{i=0}^N p_i (e^L) u [n_i t + s(n_i)] - v(e^L)$$

that is to say, the expected utility of choosing the high effort has to be higher than the expected utility associated with the low effort.

The following constrained maximisation program represent the principal's new problem:

$$\begin{aligned} \text{Max}_{s(n_i), t, i=0,1,2,\dots,N} \quad & \sum_{i=0}^N p_i(e^H) B[\theta n_i - s(n_i)] \\ \text{s.t.} \quad & \sum_{i=0}^N p_i(e^H) u[n_i t + s(n_i)] - v(e^H) \geq \underline{U} \\ & \sum_{i=0}^N [p_i(e^H) - p_i(e^L)] u[n_i t + s(n_i)] \geq v(e^H) - v(e^L) \end{aligned} \quad [14]$$

The Lagrange function associated with this problem is:

$$\begin{aligned} L(s(n_i), t, \lambda, \mu) = & \sum_{i=0}^N p_i(e^H) B[\theta n_i - s(n_i)] + \lambda [\sum_{i=0}^N p_i(e^H) u[n_i t + s(n_i)] - v(e^H) - \underline{U}] + \\ & + \mu [\sum_{i=0}^N [p_i(e^H) - p_i(e^L)] u[n_i t + s(n_i)] - [v(e^H) - v(e^L)]] \end{aligned}$$

with the control variables being the ticket price,  $t$ ; and the grant,  $s(n_i)$ . Since we have only two effort levels and the incentives restriction show us that the manager will agree to choose the high level of effort, this is not longer a control variable.

The first order conditions of this programme are:

$$\begin{aligned} \frac{\partial L}{\partial s(n_i)} = & -p_i(e^H) B'(\theta n_i - s(n_i)) + \lambda p_i(e^H) u'(n_i t + s(n_i)) + \\ & + \mu [p_i(e^H) - p_i(e^L)] u'(n_i t + s(n_i)) = 0 \quad \forall i \in \{0, 1, 2, \dots, N\} \end{aligned} \quad [15]$$

$$\begin{aligned} \frac{\partial L}{\partial t} = & \sum_{i=0}^N p_i(e^H) B' \left[ \frac{\partial n_i}{\partial t} \left( \theta - \frac{\partial s}{\partial n_i} \right) \right] + \\ & + \sum_{i=0}^N \left[ \lambda p_i(e^H) + \mu [p_i(e^H) - p_i(e^L)] \right] u' \left[ n_i + \frac{\partial n_i}{\partial t} \left( t + \frac{\partial s}{\partial n_i} \right) \right] = 0 \end{aligned} \quad [16]$$

We now analyse these conditions. First, we analyse the optimal grant under asymmetric information and second, we derive the optimal ticket price.

### a) Optimal grant mechanism

$$\frac{B'}{u'} = \lambda + \mu \left[ \frac{p_i(e^H) - p_i(e^L)}{p_i(e^H)} \right] = \lambda + \mu \left[ 1 - \frac{p_i(e^L)}{p_i(e^H)} \right] \quad \forall i \in \{0, 1, 2, \dots, N\} \quad [17]$$

If  $p_i(e^L) = p_i(e^H)$  this first order condition will be similar to equation [6] and the solution will imply a Pareto equilibrium, equivalent to the symmetric information solution. That is to say, there is no conflict between the principal and the agent since the probability of getting any result does not depend on the effort. Hence, the principal and the agent will agree on the agent choosing the low effort and the principal will pay a constant grant equal to  $s = u^{-1} [\underline{U} + v(e^L)] - n_i t$  if the agent is risk averse.

However if  $p_i(e^L) \neq p_i(e^H)$  then  $\lambda \neq \frac{B'}{u'}$  and the optimal grant mechanism will not imply a Pareto optimal equilibrium since the museum budget will change with the results (as  $u'$  depends on  $n_i$ ) even when the public agency is risk neutral and the manager risk averse. In this case, the value of  $\frac{p_i(e^L)}{p_i(e^H)}$  can be considered

as a signal about the effort realised by the agent given the observed result. The higher this value for the observed result, the higher the probability that the museum manager had chosen the low effort level and the higher  $u'$ . Since  $u'$  is decreasing in income, bad results will imply small budgets and small grants for the museum.

If the public agency does not have perfect information, it should not use the grants to fully insure the manager because he has incentives to be inefficient by reducing his effort and, for example, making inefficient expenditures or not maximising alternative sources of revenue. The best choice for the public agency is to use grants to give adequate incentives to the manager in order to improve his effort level and thereby achieve more efficient museum management.

## b) Optimal ticket price

We can rewrite equation [16] as:

$$\sum_{i=0}^N p_i(e^H) B' \left[ \frac{\partial n_i}{\partial t} \left( \theta - \frac{\partial s}{\partial n_i} \right) \right] + \sum_{i=0}^N p_i(e^H) \left[ \lambda + \mu \left[ 1 - \frac{p_i(e^L)}{p_i(e^H)} \right] \right] u' \left[ n_i + \frac{\partial n_i}{\partial t} \left( t + \frac{\partial s}{\partial n_i} \right) \right] = 0$$

and using equation [17], this first order condition can be expressed as :

$$\sum_{i=0}^N p_i(e^H) B' \left[ \frac{\partial n_i}{\partial t} \left( \theta - \frac{\partial s}{\partial n_i} \right) \right] + \sum_{i=0}^N p_i(e^H) \frac{B'}{u'} u' \left[ n_i + \frac{\partial n_i}{\partial t} \left( t + \frac{\partial s}{\partial n_i} \right) \right] = 0$$

which is exactly equation [8]. Hence, the existence of moral hazard does not affect the optimal ticket price. We have the same first order condition that we had under symmetric information with respect to the ticket price and the museum policy will fix the price on the inelastic part of the demand curve.

When the manager can hide his effort from the public agency, we have seen that the budget has to be linked to results because this will provide incentives for the manager to put more effort in. One possible way to link the budget to the results (and permit increments in the budget) would be to allow the manager to fix the ticket price and permit him to keep part of the total ticket revenue. This solution, which could sometimes be considered efficient by policymaker, is inefficient in that it implies fixing prices where private benefits



(that is, marginal revenues) are equal to the marginal costs and does not take into account social benefits. This is the main reason why incentives have to be controlled using public grants. However, to avoid other kinds of inefficiencies, grants associated with low result could even be negative.

## 5. CONCLUSIONS

In this paper we have developed a principal-agent model for museum financing. We have considered two potential sources of income: public grants and ticket revenues.

Using this framework, we can determine the optimal financing policy and the optimal managerial effort both when there is symmetric information (and where the public agency can control the manager's effort) and when the information is asymmetric (and the effort can not be controlled). Our principal-agent model justifies public funding of museums, especially when the manager can hide his effort from the public agency. In this case, the public grant has to be used by the public agency to provide adequate incentives to the manager to improve his effort level.

Analyzing the first order conditions of our model, and assuming that the principal is risk neutral and the agent risk averse, we can conclude that under symmetric information the museum budget has to be constant and independent of the number of visitors. This implies that the public agency has to fully insure the manager's museum budget, assigning him a subsidy that, given the optimal level of effort, allows the manager to obtain his reservation level of utility,  $\underline{U}$ . Hence, the public sector has to cover the deficit of the museum budget where it has not been covered by ticket sales. In this case, the public grant will decrease with the number of visitors and the box office income.

The manager's optimal effort level is Pareto-optimal with symmetric information. This implies that around this point the loss of utility due to an increment in effort must be equal to the increment in the expected social utility associated with the rise in the number of visitors. Therefore, at the equilibrium the expected marginal revenue product of effort has to be equal to the manager's marginal rate of substitution between budget and effort.

However, these conclusions do not hold under asymmetric information. When effort is difficult to control and we have a moral hazard problem, the budget has to be linked with results because the principal needs to provide some incentives to the manager in order to get high effort levels. Therefore, full insurance is inefficient in this situation. In this case, the equilibrium is no longer a Pareto optimum situation, at least with respect to the budget and the grant.

The existence of asymmetric information will have no effect on prices, which have to be fixed taking into account the public valuation of visits to the museum. Furthermore, we have found a theoretical reason to explain the inelastic pricing strategy that has been found in much empirical research, and which does not depend on the existence of asymmetric information. Moreover, the optimal ticket price is always Pareto optimal in the sense that it will equalize expected social marginal profit (expected marginal revenue plus the expected marginal social value) with the marginal cost.

Hence, transferring ticket pricing policy to the manager is not a correct way to introduce adequate incentives under any circumstances. The manager should not decide the ticket price. The public agency must regulate these prices in accordance with the social valuation and use grants as the incentive mechanism to achieve the optimal managerial effort.



## REFERENCES

- ANDERSON, R. G. W., (1998): Is Charging Economic?. *Journal of Cultural Economics* 22, 179-187.
- ASWORTH, J., and JOHNSON, P. (1996): Sources of Value for Money for Museum Visitors: Some Survey Evidence. *Journal of Cultural Economics* 20, 67-83.
- BAILEY, S., and FALCONER, P. (1998): Charging for Admission to Museums and Galleries: A Framework for Analysing the Impact on Access. *Journal of Cultural Economics* 22, 167-177.
- BARROS, C. (1998): Museum Funding: Hypothetical Philanthropy and Fair Price. Paper presented in the X<sup>th</sup> International Conference on Cultural Economics, Barcelona.
- BAUMOL, W. (1997): Public Support for the Arts: Why and Wherefore?. Working Paper, President's Committee on the Arts and the Humanities.
- DARNELL, A. (1998): Some Simple Analytics of Access and Revenue Targets. *Journal of Cultural Economics* 22, 189-196.
- DUFFY, C. T. (1992): The Rationale for Public Funding of a National Museum. In: Towse R. and Khakee, A., (Eds.), *Cultural Economics*, 1990, Springer, Berlin, 37-48.
- FREY, B. S., and POMMERHNE, W. (1989): *Muses and Markets: Explorations in the Economics of the Arts*. Basil Blackwell, Oxford.
- FREY, B. S. (1994): Cultural Economics and Museum Behaviour. *Scottish Journal of Political Economy* 41, 325-335.
- FULLERTON, D. (1991): On Justifications for Public Support of the Arts. *Journal of Cultural Economics*, 15, 67-82.
- GROSSMAN, S. J., and HART, O. (1983): An Analysis of the Principal-Agent Problem. *Econometrica* 51, 7-45.
- GUESNERIE, R., and LAFFONT, J.-J. (1984): A Complete Solution to a Class of Principal-Agent Problems with an Application to the Control of a Self-managed Firm. *Journal of Public Economics* 25, 329-69.
- HART, O., and MOORE, J. (1990): Property Rights and the Nature of the Firm. *Journal of Political Economy* 98, 1119-58.
- HEILBRUN, J., and GRAY, C. M. (2001): *The Economics of Art and Culture. An American Perspective*. Second edition, Cambridge University Press, Cambridge.
- HEY, J., and LAMBERT, P. J. (eds.) (1987): *Surveys in the Economics of Uncertainty*. Blackwell, London.

- HILLIER, B. (1997): *The Economics of Asymmetric Information*. MacMillan Press Limited, Londres.
- JOHNSON, P., and THOMAS, B. (1998): The Economics of Museums: A Research Perspective. *Journal of Cultural Economics* 22, 75-85.
- LAFFONT, J.-J. (1989): *The Economics of Uncertainty and Information*. The MIT Press, Cambridge.
- LUKSETICH, W., and PARTRIDGE, M. (1997): Demand Functions for Museums Services. *Applied Economics* 29, 1553-1559.
- MACHO STADLER, I., and PÉREZ CASTRILLO, D. (1995): *Introducción a la Teoría de la Información*. Ariel, Barcelona.
- MARBURGER, D. (1997): Optimal Ticket Pricing for performance Goods. *Managerial and Decision Economics* 18, 375-381.
- MOLHO, I. (1997): *The Economics of Information: Lying and Cheating in Markets and Organizations*. Blackwell, Oxford.
- NETZER, D. (1992): Cultural Policy in an Era of Budgetary Stringency and Fiscal Decentralization: The U.S. Experience. In: Towse R. and Khakee, A., (eds.), *Cultural Economics*, 1990, Springer, Berlin, pp. 237-246.
- NISKANEN, W. (1968): Nonmarket Decision Making the Peculiar Economics of Bureaucracy. *American Economic Review* 58, 293-305.
- NOLL, R. G. (1974): Attendance and Price Setting. In: Noll, R. G., (ed.), *Government and the Sport Business*. The Brookings Institution, Washington.
- O'HAGAN, J. W. (1995): National Museums: To Charge or Not To Charge?. *Journal of Cultural Economics* 19, 33-47.
- (1995): *The State and the Arts*. Edward Elgar, Chentelham.
- SALANT, D. J. (1992): Price Setting in Professional Team Sports. In: Sommers, P. M., (Ed.), *Diamonds Are Forever. The Business of Baseball*. The Brookings Institution, Washington D. C.
- SANTAGATA, W., and SIGNORELLO, G. (2000): Contingent Valuation and Cultural Policy Design: The Case of 'Napoli Musei Aperti'. *Journal of Cultural Economics* 24, 181-204.
- SCHUSTER, M. (1989): Determinants and Correlates of Arts Support by States. In: Shaw, D. *et al.* (eds.), *Cultural Economics*. Association for Cultural Economics, Akron, Ohio.

## ***NORMAS DE PUBLICACIÓN DE PAPELES DE TRABAJO DEL INSTITUTO DE ESTUDIOS FISCALES***

Esta colección de *Papeles de Trabajo* tiene como objetivo ofrecer un vehículo de expresión a todas aquellas personas interesadas en los temas de Economía Pública. Las normas para la presentación y selección de originales son las siguientes:

1. Todos los originales que se presenten estarán sometidos a evaluación y podrán ser directamente aceptados para su publicación, aceptados sujetos a revisión, o rechazados.
2. Los trabajos deberán enviarse por duplicado a la Subdirección de Estudios Tributarios. Instituto de Estudios Fiscales. Avda. Cardenal Herrera Oria, 378. 28035 Madrid.
3. La extensión máxima de texto escrito, incluidos apéndices y referencias bibliográficas será de 7000 palabras.
4. Los originales deberán presentarse mecanografiados a doble espacio. En la primera página deberá aparecer el título del trabajo, el nombre del autor(es) y la institución a la que pertenece, así como su dirección postal y electrónica. Además, en la primera página aparecerá también un abstract de no más de 125 palabras, los códigos JEL y las palabras clave.
5. Los epígrafes irán numerados secuencialmente siguiendo la numeración arábica. Las notas al texto irán numeradas correlativamente y aparecerán al pie de la correspondiente página. Las fórmulas matemáticas se numerarán secuencialmente ajustadas al margen derecho de las mismas. La bibliografía aparecerá al final del trabajo, bajo la inscripción "Referencias" por orden alfabético de autores y, en cada una, ajustándose al siguiente orden: autor(es), año de publicación (distinguiendo a, b, c si hay varias correspondientes al mismo autor(es) y año), título del artículo o libro, título de la revista en cursiva, número de la revista y páginas.
6. En caso de que aparezcan tablas y gráficos, éstos podrán incorporarse directamente al texto o, alternativamente, presentarse todos juntos y debidamente numerados al final del trabajo, antes de la bibliografía.
7. En cualquier caso, se deberá adjuntar un disquete con el trabajo en formato word. Siempre que el documento presente tablas y/o gráficos, éstos deberán aparecer en ficheros independientes. Asimismo, en caso de que los gráficos procedan de tablas creadas en excel, estas deberán incorporarse en el disquete debidamente identificadas.

***Junto al original del Papel de Trabajo se entregará también un resumen de un máximo de dos folios que contenga las principales implicaciones de política económica que se deriven de la investigación realizada.***

## ***PUBLISHING GUIDELINES OF WORKING PAPERS AT THE INSTITUTE FOR FISCAL STUDIES***

This serie of *Papeles de Trabajo* (working papers) aims to provide those having an interest in Public Economics with a vehicle to publicize their ideas. The rules governing submission and selection of papers are the following:

1. The manuscripts submitted will all be assessed and may be directly accepted for publication, accepted with subjections for revision or rejected.
2. The papers shall be sent in duplicate to Subdirección General de Estudios Tributarios (The Deputy Direction of Tax Studies), Instituto de Estudios Fiscales (Institute for Fiscal Studies), Avenida del Cardenal Herrera Oria, nº 378, Madrid 28035.
3. The maximum length of the text including appendices and bibliography will be no more than 7000 words.
4. The originals should be double spaced. The first page of the manuscript should contain the following information: (1) the title; (2) the name and the institutional affiliation of the author(s); (3) an abstract of no more than 125 words; (4) JEL codes and keywords; (5) the postal and e-mail address of the corresponding author.
5. Sections will be numbered in sequence with arabic numerals. Footnotes will be numbered correlatively and will appear at the foot of the corresponding page. Mathematical formulae will be numbered on the right margin of the page in sequence. Bibliographical references will appear at the end of the paper under the heading "References" in alphabetical order of authors. Each reference will have to include in this order the following terms of references: author(s), publishing date (with an a, b or c in case there are several references to the same author(s) and year), title of the article or book, name of the journal in italics, number of the issue and pages.
6. If tables and graphs are necessary, they may be included directly in the text or alternatively presented altogether and duly numbered at the end of the paper, before the bibliography.
7. In any case, a floppy disk will be enclosed in Word format. Whenever the document provides tables and/or graphs, they must be contained in separate files. Furthermore, if graphs are drawn from tables within the Excell package, these must be included in the floppy disk and duly identified.

***Together with the original copy of the working paper a brief two-page summary highlighting the main policy implications derived from the research is also requested.***

## ÚLTIMOS PAPELES DE TRABAJO EDITADOS POR EL INSTITUTO DE ESTUDIOS FISCALES

### 2000

- 1/00 Crédito fiscal a la inversión en el impuesto de sociedades y neutralidad impositiva: Más evidencia para un viejo debate.  
*Autor:* Desiderio Romero Jordán.  
Páginas: 40.
- 2/00 Estudio del consumo familiar de bienes y servicios públicos a partir de la encuesta de presupuestos familiares.  
*Autores:* Ernesto Carrillo y Manuel Tamayo.  
Páginas: 40.
- 3/00 Evidencia empírica de la convergencia real.  
*Autores:* Lorenzo Escot y Miguel Ángel Galindo.  
Páginas: 58.

### *Nueva Época*

- 4/00 The effects of human capital depreciation on experience-earnings profiles: Evidence salaried spanish men.  
*Autores:* M. Arrazola, J. de Hevia, M. Risueño y J. F. Sanz.  
Páginas: 24.
- 5/00 Las ayudas fiscales a la adquisición de inmuebles residenciales en la nueva Ley del IRPF: Un análisis comparado a través del concepto de coste de uso.  
*Autor:* José Félix Sanz Sanz.  
Páginas: 44.
- 6/00 Las medidas fiscales de estímulo del ahorro contenidas en el Real Decreto-Ley 3/2000: análisis de sus efectos a través del tipo marginal efectivo.  
*Autores:* José Manuel González Páramo y Nuria Badenes Pla.  
Páginas: 28
- 7/00 Análisis de las ganancias de bienestar asociadas a los efectos de la Reforma del IRPF sobre la oferta laboral de la familia española.  
*Autores:* Juan Prieto Rodríguez y Santiago Álvarez García.  
Páginas 32.
- 8/00 Un marco para la discusión de los efectos de la política impositiva sobre los precios y el *stock* de vivienda.  
*Autor:* Miguel-Ángel López García.  
Páginas 36.
- 9/00 Descomposición de los efectos redistributivos de la Reforma del IRPF.  
*Autores:* Jorge Onrubia Fernández y María del Carmen Rodado Ruiz.  
Páginas 24.
- 10/00 Aspectos teóricos de la convergencia real, integración y política fiscal.  
*Autores:* Lorenzo Escot y Miguel-Ángel Galindo.  
Páginas 28.

## 2001

- 1/01 Notas sobre desagregación temporal de series económicas.  
*Autor:* Enrique M. Quilis.  
Páginas 38.
- 2/01 Estimación y comparación de tasas de rendimiento de la educación en España.  
*Autores:* M. Arrazola, J. de Hevia, M. Risueño, J.F. Sanz.  
Páginas 28.
- 3/01 Doble imposición, “efecto clientela” y aversión al riesgo.  
*Autores:* Antonio Bustos Gisbert y Francisco Pedraja Chaparro.  
Páginas 34.
- 4/01 Non-Institutional Federalism in Spain.  
*Autor:* Joan Rosselló Villalonga.  
Páginas 32.
- 5/01 Estimating utilisation of Health care: A groupe data regression approach.  
*Autor:* Mabel Amaya Amaya.  
Páginas 30.
- 6/01 Shapley inequality decomposition by factor components.  
*Autores:* Mercedes Sastre y Alain Trannoy  
Páginas 40.
- 7/01 An empirical analysis of the demand for physician services across the European Union.  
*Autores:* Sergi Jiménez Martín, José M. Labeaga y Maite Martínez-Granado  
Páginas 40.
- 8/01 Demand, childbirth and the costs of babies: evidence from spanish panel data.  
*Autores:* José M.<sup>a</sup> Labeaga, Ian Preston y Juan A. Sanchis-Llopis  
Páginas 56.
- 9/01 Imposición marginal efectiva sobre el factor trabajo: Breve nota metodológica y comparación internacional.  
*Autores:* Desiderio Romero Jordán y José Félix Sanz Sanz  
Páginas 40.
- 10/01 A non-parametric decomposition of redistribution into vertical and horizontal components.  
*Autores:* Irene Perrote, Juan Gabriel Rodríguez y Rafael Salas.  
Páginas 28.
- 11/01 Efectos sobre la renta disponible y el bienestar de la deducción por rentas ganadas en el IRPF.  
*Autora:* Nuria Badenes Plá.  
Páginas 28.
- 12/01 Seguros sanitarios y gasto público en España. Un modelo de microsimulación para las políticas de gastos fiscales en sanidad.  
*Autora:* Ángel López Nicolás.  
Páginas 40.
- 13/01 A complete parametrical class of redistribution and progressivity measures  
*Autores:* Isabel Rabadán y Rafael Salas.  
Páginas 20.
- 14/01 La medición de la desigualdad económica.  
*Autor:* Rafael Salas.  
Páginas 40.

- 15/01 Crecimiento económico y dinámica de distribución de la renta en las regiones de la UE: un análisis no paramétrico.  
*Autores:* Julián Ramajo Hernández y María del Mar Salinas Jiménez.  
Páginas 32.
- 16/01 La descentralización territorial de las prestaciones asistenciales: efectos sobre la igualdad.  
*Autores:* Luis Ayala Cañón, Rosa Martínez López y Jesus Ruiz-Huerta.  
Páginas 48.
- 17/01 Redistribution and labour supply.  
*Autores:* Jorge Onrubia, Rafael Salas y José Félix Sanz.  
Páginas 24.
- 18/01 Medición de la eficiencia técnica en la economía española: El papel de las infraestructuras productivas.  
*Autoras:* M.<sup>a</sup> Jesús Delgado Rodríguez e Inmaculada Álvarez Ayuso.  
Páginas 32.
- 19/01 Inversión pública eficiente e impuestos distorsionantes en un contexto de equilibrio general.  
*Autores:* José Manuel González-Páramo y Diego Martínez López.  
Páginas 28.
- 20/01 La incidencia distributiva del gasto público social. Análisis general y tratamiento específico de la incidencia distributiva entre grupos sociales y entre grupos de edad.  
*Autor:* Jorge Calero Martínez.  
Páginas 36.
- 21/01 Crisis cambiarias: Teoría y evidencia.  
*Autor:* Óscar Bajo Rubio.  
Páginas 32.
- 22/01 Distributive impact and evaluation of devolution proposals in Japanese local public finance.  
*Autores:* Kazuyuki Nakamura, Minoru Kunizaki and Masanori Tahira.  
Páginas 36.
- 23/01 El funcionamiento de los sistemas de garantía en el modelo de financiación autonómica.  
*Autor:* Alfonso Utrilla de la Hoz.  
Páginas 48.
- 24/01 Rendimiento de la educación en España: Nueva evidencia de las diferencias entre Hombres y Mujeres.  
*Autores:* M. Arrazola y J. de Hevia.  
Páginas 36.
- 25/01 Fecundidad y beneficios fiscales y sociales por descendientes.  
*Autora:* Anabel Zárate Marco.  
Páginas 52.
- 26/01 Estimación de precios sombra a partir del análisis Input-Output: Aplicación a la economía española.  
*Autora:* Guadalupe Souto Nieves.  
Páginas 56.
- 27/01 Análisis empírico de la depreciación del capital humano para el caso de las Mujeres y los Hombres en España.  
*Autores:* M. Arrazola y J. de Hevia.  
Páginas 28.

- 28/01 Equivalence scales in tax and transfer policies.  
*Autores:* Luis Ayala, Rosa Martínez y Jesús Ruiz-Huerta  
Páginas 44.
- 29/01 Un modelo de crecimiento con restricciones de demanda: el gasto público como amortiguador del desequilibrio externo.  
*Autora:* Belén Fernández Castro.  
Páginas 44.
- 30/01 A bi-stochastic nonparametric estimator.  
*Autores:* Juan G. Rodríguez and Rafael Salas.  
Páginas 24.

## 2002

- 1/02 Las cestas autonómicas.  
*Autores:* Alejandro Esteller, Jorge Navas y Pilar Sorribas.  
Páginas 72.
- 2/02 Evolución del endeudamiento autonómico entre 1985 y 1997: la incidencia de los Escenarios de Consolidación Presupuestaria y de los límites de la LOFCA.  
*Autores:* Julio López Laborda y Jaime Vallés Giménez.  
Páginas 60.
- 3/02 Optimal Pricing and Grant Policies for Museums.  
*Autores:* Juan Prieto Rodríguez y Víctor Fernández Blanco.  
Páginas 28.