

# Competition Policy Center

University of California, Berkeley

Working Paper No. CPC99-01

## Measuring Market Power in the Ready-to-Eat Cereal Industry

**Aviv Nevo**

Economics Department, University of California

March 1999

Keywords: Discrete choice models, random coefficients, product differentiation, ready-to-eat cereal industry, market power, price competition

### Abstract:

The ready-to-eat cereal industry is characterized by high concentration, high price-cost margins, large advertising-to-sales ratios, and numerous introductions of new products. Previous researchers have concluded that the ready-to-eat cereal industry is a classic example of an industry with nearly collusive pricing behavior and intense non-price competition. This paper empirically examines this conclusion. In particular, I estimate price-cost margins, but more importantly I am able empirically to separate these margins into three sources: (1) that which is due to product differentiation; (2) that which is due to multi-product firm pricing; and (3) that due to potential price collusion. The results suggest that given the demand for different brands of cereal, the first two effects explain most of the observed price-cost markups. I conclude that prices in the industry are consistent with non-collusive pricing behavior, despite the high price-cost margins. Leading firms are able to maintain a portfolio of differentiated products and influence the perceived product quality. It is these two factors that lead to high price-cost margins.

---

This paper is based on various chapters of my 1997 Harvard University Ph. D. dissertation. Special thanks to my advisors, Gary Chamberlain, Zvi Griliches and Michael Whinston for guidance and support. I wish to thank Ronald Cotterill, the director of the Food Marketing Policy Center in the University of Connecticut, for allowing me to use his data. I am grateful to Steve Berry, Ernst Berndt, Tim Bresnahan, David Cutler, Jerry Hausman, Igal Hendel, Kei Hirano, John Horn, Joanne McLean, Ariel Pakes, Rob Porter, Jim Powell, John van Reenen, Richard Schmalensee, Sadek Wahba, Frank Wolak, Catherine Wolfram, the editor, three anonymous referees, and participants in several seminars for comments and suggestions. Excellent research assistance was provided by Anita Lopez. Financial support from the Graduate School Fellowship Fund at Harvard University, the Alfred P. Sloan Doctoral Dissertation Fellowship Fund, and the UC-Berkeley Committee on Research Junior Faculty Fund is gratefully acknowledged. Address for correspondence, 549 Evans Hall #3880, Department of Economics, Berkeley, CA 94720-3880, e-mail: [nevo@econ.berkeley.edu](mailto:nevo@econ.berkeley.edu)  
This paper is available on-line at <http://www.haas.berkeley.edu/groups/cpc/pubs/Publications.html>

## 1. INTRODUCTION

The ready-to-eat (RTE) cereal industry is characterized by high concentration, high price-cost margins, large advertising-to-sales ratios and aggressive introduction of new products. These facts have made this industry a classic example of a concentrated differentiated-products industry in which price competition is approximately cooperative and rivalry is channeled into advertising and new product introduction.<sup>2</sup> This paper examines these conclusions regarding price competition in the RTE cereal industry. In particular, I estimate the true economic price-cost margins (PCM) in the industry and empirically distinguish between three sources of these margins. The first source is the firms' ability to differentiate its brands from those of its competition. The second is the portfolio effect; if two brands are perceived as imperfect substitutes, a firm producing both would charge a higher price than two separate manufacturers. Finally, the main players in the industry could engage in price collusion.

My general strategy is to model demand as a function of product characteristics, heterogeneous consumer preferences, and unknown parameters. Using data rarely available for academic research, I extend recent developments in techniques for estimating demand and supply in industries with closely related products (see Bresnahan, 1981, 1987; Berry, 1994; Berry, Levinsohn, and Pakes, henceforth BLP, 1995) to estimate demand parameters. These estimates are used to compute the PCM implied by three hypothetical industry structures: single-product firms; the current structure (i.e., a few firms with many brands each); and a multi-brand monopolist producing all brands. The markup in the first structure is due only to product-differentiation. In the second case the markup also includes the multi-product firm portfolio effect. Finally, the last structure produces the markups based on joint ownership, or full

---

<sup>2</sup>For example, Scherer (1982) argues that "...the cereal industry's conduct fits well the model of price competition-avoiding, non-price competition-prone oligopoly" (pg. 189).

collusion. I choose among the three conduct models by comparing the PCM predicted by them to observed PCM. Despite the fact that I observe only a crude measure of actual PCM, I am still able to distinguish between the markups predicted by these models.

The results suggest that the markups implied by the current industry structure, under a Nash-Bertrand pricing game, match the observed PCM. If we take Nash-Bertrand prices as the non-collusive benchmark, then even with PCM higher than 45% we can conclude that pricing in the RTE cereal industry is approximately non-collusive. High PCM are not due to lack of price competition, but are due to consumers' willingness to pay for their favorite brand, and pricing decisions by firms that take into account substitution between their own brands. To the extent that there is any market power in this industry, it is due to the firms' ability to maintain a portfolio of differentiated products and influence perceived product quality through advertising.

The exercise relies on the ability to consistently estimate demand. I use a three-dimensional panel of quantities and prices for 25 brands of cereal in up to 65 U.S. cities over a period of 20 quarters, collected using scanning devices in a representative sample of supermarkets. The estimation has to deal with two challenges: (1) the correlation between prices and brand-city-quarter specific demand shocks, which are included in the econometric error term, and (2) the large number of own- and cross-price elasticities implied by the large number of products. I deal with the first challenge by exploiting the panel structure of the data. The identifying assumption is that, controlling for brand-specific means and demographics, city-specific demand shocks are independent across cities.<sup>3</sup> Given this assumption, a demand shock for a particular brand will be independent of prices of the same brand in other cities. Due to common regional marginal cost shocks, prices of a brand in different cities within a region will

---

<sup>3</sup>This assumption is similar to the one made in Hausman (1996), although our setups differ substantially.

be correlated, and therefore can be used as valid instrumental variables. However, there are several reasons why this identifying assumption might be invalid. For this reason I also explore the use of observed variation in city-specific marginal costs. Not only are the demand estimates from these two assumptions essentially identical, they are also similar to estimates obtained using different data sets and alternative identifying assumptions.

The second difficulty is to estimate the large number of substitution parameters implied by the numerous products in this industry. In this paper I overcome this difficulty by following the discrete-choice literature (for example see McFadden, 1973, 1978, 1981; Cardell, 1989; Berry, 1994; or BLP). I follow closely the method proposed by Berry (1994) and BLP, but using the richness of my panel data I am able to combine panel data techniques with this method and add to it in several ways. First, the method is applied to RTE cereal in which one might doubt the ability of observed product characteristics to explain utility. By adding a brand fixed effect I control for unobserved quality for which previous work had to instrument. Potential difficulties with identifying all the parameters are solved using a minimum-distance procedure, as in Chamberlain (1982). Second, most previous work assumed that observed brand characteristics are exogenous and identified demand parameters using this assumption, which is not consistent with a broader model in which brand characteristics are chosen by firms that account for consumer preferences. The identifying assumption used here is consistent with this broader model. Third, I model heterogeneity as a function of the empirical non-parametric distribution of demographics, thereby partially relaxing the parametric assumptions previously used.

The rest of the paper is organized as follows. Section 2 gives a short description of the industry. In Section 3 I outline the empirical model and discuss the implications of different

modeling decisions. Section 4 describes the data, the estimation procedure, instruments, and the inclusion of brand fixed effects. Results for two demand models, different sets of instruments, and tests between the various supply models are presented in Section 5. Section 6 concludes and outlines extensions.

## **2. THE READY-TO-EAT CEREAL INDUSTRY**

The first ready-to-eat cold breakfast cereal was probably introduced by James Caleb Jackson in 1863, at his Jackson Sanatorium in Dansville, New York. The real origin of the industry, however, was in Battle Creek Michigan. It was there that Dr. John Harvey Kellogg, the manager of the vegetarian Seventh-Day Adventist (health) Sanatorium, introduced ready-to-eat cereal as a healthy breakfast alternative. Word of the success of Kellogg's new product spread quickly and attracted many entrants, one of which was Charles William Post, founder of the Post Cereal company. Post was originally one of Kellogg's patients but later a bitter rival. Additional entrants included Quaker Oats, a company with origins in the hot oatmeal market, a Minneapolis based milling company, later called General Mills, and the National Biscuit Company, now known as Nabisco.<sup>4</sup>

Driven by aggressive marketing, rapid introduction of new brands and fueled by vitamin fortification, pre-sweetening and the surge of interest in natural cereals, the sales of RTE cereals grew steadily. In 1997 the U.S. market consumed approximately three billion pounds of cereal, leading to roughly \$9 billion in sales. During this period of growth the industry's structure changed dramatically: from a fragmented industry at the turn of the century, to one of the most concentrated US industries by the late 1940's. Table 1 shows the volume (pounds sold) market

---

<sup>4</sup>A full account of the evolution of this industry is beyond the scope of this paper. For a detailed non-economic description of the evolution of the industry see Bruce and Crawford (1995); for an economic analysis, see Scherer (1982) or for a much more concise summary, see Nevo (1997a).

shares starting in 1988. The top three firms dominate the market, and the top six firms can almost be defined as the sole suppliers in the industry.

For economists the concentration of the industry is troublesome because the industry leaders have been consistently earning high profits.<sup>5</sup> This has drawn the attention of regulatory agencies to the practices in the industry. Perhaps the best-known case was the "shared monopoly" complaint brought by the FTC against the top three manufacturers -- Kellogg, General Mills and Post -- in the 1970's. The focus of that specific complaint was one of the industry's key characteristics: an enormous number of brands.<sup>6</sup> There are currently over 200 brands of RTE cereal, even without counting negligible brands. The brand-level market shares vary from 5% (Kellogg's Corn Flakes and General Mills' Cheerios) to 1% (the 25th brand) to less than 0.1% (the 100th brand). Not only are there many brands in the industry, but the rate at which new ones are introduced is high and has been increasing over time. From 1950 to 1972 only 80 new brands were introduced. During the 1980's, however, the top six producers introduced 67 new major brands. Somewhat of a side point is that out of these 67 brands only 25 (37 percent) were still on the shelf in 1993.<sup>7</sup>

Competition by means of advertising was a characteristic of the industry since its early days. Today, advertising-to-sales ratios are about 13 percent, compared to 2-4 percent in other food industries. For the well-established cereal brands, used in the analysis below, the advertising-to-sales ratio is roughly 18 percent. Additional promotional activities are not

---

<sup>5</sup>Fruhan (1979, chapter 1) ranked Kellogg's as 3 out of 1285 U.S. nonfinancial corporations in terms of profitability, while Mueller (1986) estimated Kellogg's long-run equilibrium profits rate to be 120% above the mean return of U.S. industrial firms. Scherer (1982) reports the weighted average after-tax returns on the cereal division assets, for the industry leaders, was 19.8%, for 1958-1970. In the 1980's and early 1990's profits averaged 17% of sales.

<sup>6</sup>See Schmalensee (1978) or Scherer (1982) for the economic argument behind the FTC's case.

<sup>7</sup>See Corts (1996a) Exhibit 5, Schmalensee (1978, pg. 306) and Scherer (1982, Table 3).

included in the above ratios. An example of such an activity is manufacturers' coupons, which were widely used in this industry. For more information on coupons and their impact, see Nevo and Wolfram (1999).

Contrary to common belief, RTE cereals are quite complicated to produce. There are five basic methods used in the production of RTE cereals: granulation, flaking, shredding, puffing and extrusion. Although the fundamentals of the production are simple and well known, these processes, especially extrusion, require production experience. A typical plant will produce \$400 million of output per year, employ 800 workers, and will require an initial investment of \$300 million. Several brands are produced in a single location in order to exploit economies of scale in packaging. Table 2 presents estimates of the cost of production, computed from aggregate Census of Manufacturers SIC 2043. The second column presents the equivalent figures for the food sector as a whole (SIC 20). The gross price-average variable cost margin for the RTE cereal industry is 64.4%, compared to 26.5% for the aggregate food sector.<sup>8</sup> Accounting estimates of price-marginal cost margins taken from Cotterill (1996), presented in Table 3, are close to those above. Here the estimated gross margin is 7 percentage points lower than before, which can be attributed to the fact that these are marginal versus average costs. The last column of the table presents the retail margins.

### **3. THE EMPIRICAL FRAMEWORK**

My general strategy is to consider different models of supply conduct. For each model of supply, the pricing decision depends on brand-level demand, which is modeled as a function of product characteristics and consumer preferences. Demand parameters are estimated and used

---

<sup>8</sup>The margins for the aggregate food sector are given only as support to the claim previously made that the margins of RTE cereal are "high". At this point no attempt has been made to explain these differences. As was pointed out in the Introduction, several explanations are possible. One of the goals of the analysis below will be to separate these possible explanations.

to compute the PCM implied by different models of conduct. I use additional information on costs to compute observed PCM and choose the conduct model that best fits these margins.

### 3.1 Supply

Suppose there are  $F$  firms, each of which produces some subset,  $\mathcal{F}_f$ , of the  $j=1, \dots, J$  different brands of RTE cereal. The profits of firm  $f$  are

$$\Pi_f = \sum_{j \in \mathcal{F}_f} (p_j - mc_j) M s_j(p) - C_f$$

where  $s_j(p)$  is the market share of brand  $j$ , which is a function of the prices of all brands,  $M$  is the size of the market, and  $C_f$  is the fixed cost of production. Assuming the existence of a pure-strategy Bertrand-Nash equilibrium in prices, and that the prices that support it are strictly positive, the price  $p_j$  of any product  $j$  produced by firm  $f$  must satisfy the first-order condition

$$s_j(p) + \sum_{r \in \mathcal{F}_f} (p_r - mc_r) \frac{\partial s_r(p)}{\partial p_j} = 0.$$

This set of  $J$  equations implies price-costs margins for each good. The markups can be solved for explicitly by defining  $S_{jr} = -\partial s_r / \partial p_j$   $j, r = 1, \dots, J$ ,

$$\Omega_{jr}^* = \begin{cases} 1, & \text{if } \exists f: \{r, j\} \subset \mathcal{F}_f; \\ 0, & \text{otherwise} \end{cases}$$

and  $\Omega$  is a  $J \times J$  matrix with  $\Omega_{jr} = \Omega_{jr}^* S_{jr}$ . In vector notation, the first-order conditions become

$$s(p) - \Omega(p - mc) = 0,$$

where  $s(\cdot)$ ,  $p$  and  $mc$  are  $J \times 1$  vectors of market shares, prices and marginal-cost, respectively.

This implies a markup equation

$$(1) \quad p - mc = \Omega^{-1} s(p).$$

Using estimates of the demand parameters, we can estimate PCM without observing actual costs, and we can distinguish between three different causes of the markups: the effect due

to the differentiation of the products, the portfolio effect, and the effect of price collusion. This is done by evaluating the PCM in three hypothetical industry conduct models. The first structure is that of single-product firms, in which the price of each brand is set by a profit-maximizing agent that considers only the profits from that brand. The second is the current structure, where multi-product firms set the prices of all their products jointly. The final structure is joint profit-maximization of all the brands, which corresponds to monopoly or perfect price collusion. Each of these is estimated by defining the ownership structure,  $\mathcal{F}_p$  and ownership matrix,  $\Omega^*$ .

PCM in the first structure arise only from product differentiation. The difference between the margins in the first two cases is due to the portfolio effect. The last structure bounds the increase in the margins due to price collusion. Once these margins are computed we can choose between the models by comparing the predicted PCM to the observed PCM.

### 3.2 Demand

The exercise suggested in the previous section allows us to estimate the PCM and separate them into different parts. However, it relies on the ability to consistently estimate the own- and cross-price elasticities. As previously pointed out, this is not an easy task in an industry with many closely related products. In the analysis below I follow the approach taken by the discrete-choice literature and circumvent the dimensionality problem by projecting the products onto a characteristics space, thereby making the relevant dimension the dimension of this space and not the number of products.

Suppose we observe  $t=1, \dots, T$  markets, each with  $i=1, \dots, I_t$  consumers. In the estimation below a market will be defined as a city-quarter combination. The conditional indirect utility of consumer  $i$  from product  $j$  at market  $t$  is

$$(2) \quad \begin{aligned} u_{ijt} &= x_j \beta_i^* - \alpha_i^* p_{jt} + \xi_j + \Delta \xi_{jt} + \epsilon_{ijt}, \\ i &= 1, \dots, I, \quad j = 1, \dots, J, \quad t = 1, \dots, T, \end{aligned}$$

where  $x_j$  is  $K$ -dimensional (row) vector of observable product characteristics,  $p_{jt}$  is the price of product  $j$  in market  $t$ ,  $\xi_j$  is the national mean valuation of the unobserved (by the econometrician) product characteristics,  $\Delta \xi_{jt}$  is a city-quarter specific deviation from this mean, and  $\epsilon_{ijt}$  is a mean-zero stochastic term. Finally,  $(\alpha_i^* \beta_i^*)$  are  $K+1$  individual-specific coefficients.

Examples of observed characteristics are calories, sodium and fiber content. Unobserved characteristics include a vertical component (at equal prices all consumers weakly prefer a national brand to a generic version) and market-specific effects of merchandising (other than national advertising). I control for the vertical component,  $\xi_j$ , by including brand-specific dummy variables in the regressions. Market-specific components are included in  $\Delta \xi_{jt}$  and are left as "error terms".<sup>9</sup> I assume both firms and consumers observe all the product characteristics and take them into consideration when making decisions.

I model the distribution of consumers' taste parameters for the characteristics as multivariate normal (conditional on demographics) with a mean that is a function of demographic variables and parameters to be estimated, and a variance-covariance matrix to be estimated. Let

$$(3) \quad \begin{pmatrix} \alpha_i^* \\ \beta_i^* \end{pmatrix} = \begin{pmatrix} \alpha_i \\ \beta_i \end{pmatrix} + \Pi D_i + \Sigma v_i, \quad v_i \sim N(0, I_{K+1}),$$

where  $K$  is the dimension of the observed characteristics vector,  $D_i$  is a  $d \times 1$  vector of demographic variables,  $\Pi$  is a  $(K+1) \times d$  matrix of coefficients that measure how the taste characteristics vary with demographics, and  $\Sigma$  is a scaling matrix. This specification allows the

---

<sup>9</sup>This specification assumes that the unobserved components are common to all consumers. An alternative is to model the distribution of the valuation of the unobserved characteristics, as in Das, Olley and Pakes (1994). For a further discussion see Nevo (1998a).

individual characteristics to consist of demographics that are "observed" and additional characteristics that are "unobserved", denoted  $D_i$  and  $v_i$  respectively.<sup>10</sup>

The specification of the demand system is completed with the introduction of an "outside good"; the consumers may decide not to purchase any of the brands. Without this allowance a homogenous price increase (relative to other sectors) of all products does not change quantities purchased. The indirect utility from this outside option is

$$u_{i0t} = \xi_0 + \pi_0 D_i + \sigma_0 v_{i0} + \epsilon_{i0t} .$$

The mean utility of the outside good is not identified (without either making more assumptions or normalizing one of the "inside" goods), thus I normalize  $\xi_0$  to zero. The coefficients,  $\pi_0$  and  $\sigma_0$ , are not identified separately from an intercept, in equation (2), that varies with consumer characteristics.

Let  $\theta = (\theta_1, \theta_2)$  be a vector containing all parameters of the model. The vector  $\theta_1 = (\alpha, \beta)$  contains the linear parameters and the vector  $\theta_2 = (\text{vec}(\Pi), \text{vec}(\Sigma))$  the non-linear parameters.<sup>11</sup>

Combining equations (2) and (3)

$$(4) \quad u_{ijt} = \delta_{jt}(x_j, p_{jt}, \xi_j, \Delta \xi_{jt}; \theta_1) + \mu_{ijt}(x_j, p_{jt}, v_i, D_i; \theta_2) + \epsilon_{ijt}$$

$$\delta_{jt} = x_j \beta - \alpha p_{jt} + \xi_j + \Delta \xi_{jt}, \quad \mu_{ijt} = [p_{jt}, x_j]' * (\Pi D_i + \Sigma v_i)$$

where  $[p_{jt}, x_j]$  is a  $(K+1) \times 1$  vector. The utility is now expressed as the mean utility, represented by  $\delta_{jt}$ , and a mean-zero heteroskedastic deviation from that mean,  $\mu_{ijt} + \epsilon_{ijt}$ , which captures the effects of the random coefficients.

---

<sup>10</sup>The distinction between "observed" and "unobserved" individual characteristics refers to auxiliary data sets and not to the main data source, which includes only aggregate quantities and average prices. The distribution of the "observed" characteristics can be estimated from these additional sources.

<sup>11</sup>The reasons for names will become apparent below.

Consumers are assumed to purchase one unit of the good that gives the highest utility.<sup>12</sup>

This implicitly defines the set of unobserved variables that lead to the choice of good  $j$ .

Formally, let this set be

$$A_{jt}(x, p_t, \delta_t; \theta_2) = \{(D_{it}, v_{it}, \epsilon_{it}) \mid u_{ijt} \geq u_{ilt} \quad \forall l=0, 1, \dots, J\}$$

where  $x$  are the characteristics of all brands,  $p_t = (p_{1t}, \dots, p_{Jt})'$  and  $\delta_t = (\delta_{1t}, \dots, \delta_{Jt})'$ . Assuming ties occur with zero probability, the market share of the  $j$ th product as a function of the mean utility levels of all the  $J+1$  goods, given the parameters, is

$$(5) \quad s_{jt}(x, p_t, \delta_t; \theta_2) = \int_{A_{jt}} dP^*(D, v, \epsilon) = \int_{A_{jt}} dP^*(\epsilon) dP^*(v) dP^*(D) ,$$

where  $P^*(\cdot)$  denotes population distribution functions. The second equality is a consequence of an assumption of independence of  $D$ ,  $v$  and  $\epsilon$ .

By making assumptions on the distribution of the individual attributes,  $(D_{it}, v_{it}, \epsilon_{it})$ , we can compute the integral given in equation (5), either analytically or numerically. Given aggregate quantities and prices, a straightforward estimation strategy is to choose parameters that minimize the distance (in some metric) between the market shares predicted by equation (5) and the observed shares. The actual estimation is slightly more complex because it also has to deal with the correlation between prices and demand shocks, which enter equation (5) non-linearly.

A simplifying assumption commonly made in order to solve the integral given in equation (5) is that consumer heterogeneity enters the model only through the separable additive random shocks,  $\epsilon_{ijt}$ , and that these shocks are distributed i.i.d. with a Type I extreme-value

---

<sup>12</sup>A comment is in place about the realism of the assumption that consumers choose no more than one brand. Many households buy more than one brand of cereal in each supermarket trip but most people consume only one brand of cereal at a time, which is the relevant fact for this modeling assumption. Nevertheless, if one is still unwilling to accept that this is a negligible phenomenon then this model can be viewed as an approximation to the true choice model. An alternative is to explicitly model the choice of multiple products, or continuous quantities (as in Dubin and McFadden, 1984; or Hendel, 1998).

distribution. This assumption reduces the model to the well-known (multinomial) Logit model, which is appealing due to its tractability though it restricts the own- and cross-price elasticities (for details see McFadden, 1981; or BLP). Slightly less restrictive models, in which the i.i.d. assumption is replaced with a variance components structure, are available (see the Generalized Extreme Value model introduced by McFadden, 1978). The Nested Logit model and the Principles of Differentiation Generalized Extreme Value model (see Bresnahan, Stern and Trajtenberg, 1997) fall within this class. While less restrictive than the Logit model both models derive substitution patterns from a priori segmentation.

The full model nests all of these other models and has several advantages over them. First, it allows for flexible own-price elasticities, which will be driven by the different price sensitivity of different consumers who purchase the various products, not by functional-form assumptions about how price enters the indirect utility. Second, since the composite random shock,  $\mu_{ijt} + \varepsilon_{ijt}$ , is no longer independent of the product characteristics, the cross-price substitution patterns will be driven by these characteristics. Such substitution patterns are not constrained by a priori segmentation of the market, yet at the same time can take advantage of this segmentation. Furthermore, McFadden and Train (1997) show that the full model can approximate arbitrarily close any choice model. In particular, the multinomial Probit model (see Hausman and Wise, 1978) and the "universal" Logit (see McFadden, 1981).

## **4. DATA AND ESTIMATION**

### *4.1 The Data*

The data required to consistently estimate the model previously described consists of the following variables: market shares and prices in each market (in this paper a city-quarter), brand characteristics, advertising and information on the distribution of demographics.

Market shares and prices were obtained from the IRI Infoscan Data Base at the University of Connecticut.<sup>13</sup> Definition of the variables and the details of the data construction are given in Appendix A. These data are aggregated by brand (for example different size boxes are considered one brand), city and quarter. The data covers up to 65 different cities (the exact number increases over time), and ranges from the first quarter of 1988 to the last quarter of 1992. The results presented below were computed using the 25 brands with the highest national market shares in the last quarter of 1992. For all, except one, there are 1124 observations (i.e., they are present in all quarters and all cities). The exception is Post Honey Bunches of Oats, which appears in the data only in the first quarter of 1989. The combined city-level market share of the brands in the sample varies between 43 and 62 percent of the total volume of cereal sold in each city and quarter. Combined national market shares vary between 55 and 60 percent. I discuss below the potential bias from restricting attention to this set of products.

Summary statistics for the main variables are provided in Table 5. The last three columns show the percentage of variance due to brand, city, and quarter dummy variables. Controlling for the variation between brands, most of the variation in market shares, and even more so in prices, is due to differences across cities. The variation in prices is due to both exogenous and endogenous sources (i.e., variation correlated with demand shocks). Consistent estimation will have to separate these effects. The Infoscan price and quantity data were matched with a information on product characteristics and the distribution of individual demographics obtained from the CPS, see Appendix A for details.

#### *4.2 Estimation*

I estimate the parameters of the models described in Section 3 using the data described in

---

<sup>13</sup>I am grateful to Ronald Cotterill, the director of the Food Marketing Center at the University of Connecticut, for making these data available.

the previous section by following Berry (1994) and BLP. The key point of the estimation is to exploit a population moment condition that is a product of instrumental variables and a (structural) error term, to form a (non-linear) GMM estimator. The error term is defined as the unobserved product characteristics,  $\xi_j + \Delta\xi_{jt}$  (or just  $\Delta\xi_{jt}$  if brand dummy variables are included). The main technical difficulties in the estimation are the computation of the integral defining the market shares, given in equation (5), and the inversion of the market share equations to obtain the error term (which can be plugged into the objective function). Some details of the estimation are given in Appendix A (for more details see BLP or Nevo, 1998a).

Besides slight differences in the implementation, the algorithm is similar to that used by BLP with three notable exceptions. First, the instrumental variables and the identifying assumptions that support them are different. A somewhat related point, I am able to identify the demand side without specifying a functional form for the supply side, while BLP's identification relies on the functional form of a supply equation. Finally, due to the richness of the data I am able to control for unobserved product characteristics by using brand fixed effects. In the next two sections I detail the main differences with BLP.

### 4.3 Instruments

The key identifying assumption in the estimation is the population moment condition, detailed in Appendix A, which requires a set of exogenous instrumental variables. In order to understand the need for this assumption, and to understand why (non-linear) least squares estimation will be inconsistent, we examine the pricing decision. By equation (1), prices are a function of marginal costs and a markup term,

$$(6) \quad p_{jt} = mc_{jt} + f(\xi_{jt}, \dots) = (mc_j + f_j) + (\Delta mc_{jt} + \Delta f_{jt}) .$$

This can be decomposed into an overall mean and a deviation from this mean that varies by city

and quarter. As pointed out, once brand dummy variables are included in the regression, the error term is the unobserved city-quarter specific deviation from the overall mean valuation of the brand. Since I assumed that players in the industry observe and account for this deviation, it will influence the market-specific markup and bias the estimate of price sensitivity,  $\alpha$ , if we use (non-linear) least squares. Indeed, the results presented in the next section support this.

Much of the previous work<sup>14</sup> treats this endogeneity problem by assuming the "location" of brands in the characteristics space is exogenous, or at least pre-determined. Characteristics of other products will be correlated with price since the markup of each brand will depend on the distance from the nearest neighbor, and since characteristics are assumed exogenous they are valid IV's. Treating the characteristics as pre-determined, rather than reacting to demand shocks, is as reasonable (or unreasonable) here as it was in previous work. However, for our purposes the problem with using observed characteristics to form IV's is much more fundamental. By construction of the data there is no variation in each brand's observed characteristics over time and across cities. The only variation in IV's based on characteristics is a result of differences in the choice set of available brands. While there may be some variation over time due to entry and exit of brands, and across cities due to generic products, the data I have does not capture it. If brand dummy variables are included in the regression the matrix of IV's will be essentially singular.<sup>15</sup> A version of this identifying strategy can be used if the brand dummy variables are not included as regressors but are used as IV's instead. Using the brand dummy variables as IV's is a non-parametric way to use all the information contained in the characteristics (if these are essentially fixed). Results from this approach are presented below.

---

<sup>14</sup>See for example Bresnahan (1981, 1987), Berry (1994), BLP (1995), or Bresnahan, Stern and Trajtenberg (1997).

<sup>15</sup>It will not be exactly singular because one of the products was not present in all quarters.

Since this most-commonly-used approach will not work if brand fixed effects are included I use two alternative sets of instrumental variables in an attempt to separate the exogenous variation in prices (due to differences in marginal costs) and endogenous variation (due to differences in unobserved valuation). First, I use an approach similar to that used by Hausman (1996) and exploit the panel structure of the data. The identifying assumption is that, controlling for brand-specific means and demographics, city-specific valuations are independent across cities (but are allowed to be correlated within a city). Given this assumption, the prices of the brand in other cities are valid IV's. From equation (6) we see that prices of brand  $j$  in two cities will be correlated due to the common marginal cost, but due to the independence assumption will be uncorrelated with market-specific valuation. One could potentially use prices in all other cities and all quarters as instruments. I use regional quarterly average prices (excluding the city being instrumented) in all twenty quarters.<sup>16</sup>

There are several plausible situations in which the independence assumption will not hold. Suppose there is a national (or regional) demand shock. For example, the discovery that fiber reduces the risk of cancer. This discovery will increase the unobserved valuation of all fiber-intensive brands in all cities, and the independence assumption will be violated. However, the results below concentrate on well-established brands for which it seems reasonable to assume there are less systematic demand shocks. Also, aggregate shocks to the cereal market will be captured by time dummy variables.

Suppose one believes that local advertising and promotions are coordinated across city borders, but are limited to regions, and that these activities influence demand. Then the independence assumption will be violated for cities in the same region, and prices in cities in the

---

<sup>16</sup>There is no claim made here with regards to the "optimality" of these IV's. A potentially interesting question might be are there other ways of weighting the information from different cities.

same region will not be valid instrumental variables. However, given the size of the IRI "cities" (which in most cases are larger than MSA's) and the size of the Census regions, this might be less of a problem. The size of the IRI city determines how far the activity has to go in order to cross city borders; the larger the city, the smaller the chance of correlation with neighboring cities. Similarly, the larger the Census region the less likely is correlation with all cities in the region. Finally, the IRI data is used by the firms in the industry, thus it is not unlikely that they base their strategies on a city-level geographic split.

Determining how plausible are these, and possibly other situations is an empirical issue. I approach it by examining another set of instrumental variables that attempts to proxy for the marginal costs directly and compare the difference between the estimates implied by the different sets of IV's. The marginal costs include production (materials, labor and energy), packaging, and distribution costs. Direct production and packaging costs exhibit little variation and are too small a percentage of marginal costs to be correlated with prices. Also, except for small variations over time, a brand dummy variable, which is included as one of the regressors, proxies for these costs. The last component of marginal costs, distribution costs, includes the cost of transportation, shelf space, and labor. These are proxied by region dummy variables, which pick up transportation costs; city density, which is a proxy for the difference in the cost of space; and average city earning in the supermarket sector computed from the CPS Monthly Earning Files.

A persistent regional shock for certain brands will violate the assumption underlying the validity of these IV's. If, for example, all western states value natural cereals more than east-coast states, region-specific dummy variables will be correlated with the error term. However, in order for this argument to work the difference in valuation of brands has to be above and

beyond what is explained by demographics and heterogeneity since both are controlled for.

#### 4.4 *Brand-Specific Dummy Variables*

As previously pointed out, one of the main differences between this paper and previous work is the inclusion of brand-specific dummy variables as product characteristics. There are at least two good reasons to include these dummy variables. First, in any case where we are unsure that the observed characteristics capture the true factors that determine utility fixed effects should be included in order to improve the fit of the model. Note that this helps fit the mean utility level,  $\delta_j(\cdot)$ , while substitution patterns are still driven by observed characteristics (either physical characteristics or market segmentation), as is the case if we were not to include brand fixed effects.

Furthermore, a major motivation (see Berry, 1994) for the estimation scheme previously described is the need to instrument for the correlation between prices and the unobserved quality of the product,  $\xi_j$ . A brand-specific dummy variable captures the characteristics that do not vary by market, namely,  $x_j\beta + \xi_j$ . Therefore, the correlation between prices and the unobserved quality is fully accounted for and does not require an instrument. In order to introduce brand-specific dummy variable we require observations on more than one market. However, even without these dummy variables, fitting the model using observations from a single market is difficult (see BLP, footnote 30).

There are two potential objections to the use of brand dummy variables. First, the main motivation for the use of discrete-choice models was to reduce the dimensionality problem. Introducing of brand fixed effects increases the number of parameters only with  $J$  (the number of brands) and not  $J^2$ . Thus we have not defeated the purpose of using a discrete-choice model. Furthermore, the brand dummy variables all enter as part of the linear parameters and do not

increase the computational difficulty.

In order to retrieve the taste coefficients,  $\beta$ , when brand fixed effects are included in the regression, I use a minimum-distance procedure (as in Chamberlain, 1982). Let  $d$  denote the  $J \times 1$  vector of brand dummy coefficients,  $X$  be the  $J \times K$  ( $K < J$ ) matrix of product characteristics, and  $\xi$  be the  $J \times 1$  vector of unobserved product qualities. Then from (2)

$$d = X\beta + \xi .$$

If we assume that  $E[\xi|X] = 0$ ,<sup>17</sup> the estimates of  $\beta$  and  $\xi$  are

$$\hat{\beta} = (X'V_d^{-1}X)^{-1}X'V_d^{-1}\hat{d}, \quad \hat{\xi} = \hat{d} - X\hat{\beta}$$

where  $\hat{d}$  is the vector of coefficients estimated from the procedure described in the previous section, and  $V_d$  is the variance-covariance matrix of these estimates. The coefficients on the brand dummy variables provide an "unrestricted" estimate of mean utility. The minimum-distance estimator projects these estimates onto a lower  $K$ -dimensional space, which is implied by a "restricted" model that sets  $\xi$  to zero. Chamberlain provides a chi-squared test to evaluate these restrictions.

## 5. RESULTS

### 5.1 Logit Results

As pointed out in Section 3, the Logit model yields restrictive and unrealistic substitution patterns, and therefore is inadequate for measuring market power. Nevertheless, due to its computational simplicity it is a useful tool in getting a feel for the data. In this section I use the Logit model to examine: (1) the importance of instrumenting for price; and (2) the effects of the different sets of instrumental variables discussed in the previous section.

---

<sup>17</sup>This is the assumption required to justify the use of observed characteristics as IV's. Here, unlike previous work, this assumption is used only to recover the taste parameters and does not impact the estimates of price sensitivity.

Table 5 displays the results obtained by regressing  $\ln(S_{jt}) - \ln(S_{0t})$  on prices, advertising expenditures, brand and time dummy variables. In columns (i)-(iii) I report the results of ordinary least squares regressions. The regression in column (i) includes observed product characteristics, but not brand fixed effects, and therefore the error term includes the unobserved product characteristic,  $\xi_j$ .<sup>18</sup> The regressions in columns (ii) and (iii) include brand dummy variables and therefore fully control for  $\xi_j$ . The effects of including brand-specific dummy variables on the price and advertising coefficients are significant both statistically and economically. However, even the coefficient on price given in column (iii) is relatively low. The Logit demand structure does not impose a constant elasticity, and therefore the estimates imply a different elasticity for each brand-city-quarter combination. The mean of the distribution of own-price elasticities across the 27,862 observations is -1.53 (the median is -1.50) with a standard deviation of 0.39, and 5.5% of the observations are predicted to have inelastic demand.

Columns (iv)-(x) of Table 5 uses various sets of instrumental variables in two-stage least squares regressions. The first set of results, presented in column (iv), is based on the same specification as column (i) but uses brand dummy variables as IV's. This is similar to the identification assumptions used by much of the previous work (see Section 4.3). Indeed, compared to column (i) the price coefficient has nearly doubled, but it is almost identical to the coefficients from the OLS regression which includes brand dummy variables as regressors.

Column (v) uses the average regional prices in all twenty quarters<sup>19</sup> as instrumental

---

<sup>18</sup>The unreported coefficients on the product characteristics are (s.e.): constant, -4.44 (0.04), fatcal, 0.17 (0.04), sugar, 2.7(0.09), mushy, -0.12 (0.011), fiber, 0.04 (0.06), all family segment, 0.53 (0.02), kids segment, 0.47 (0.02), health segment, 0.53 (0.02).

<sup>19</sup>The results are essentially the same if I use only the regional average price for that quarter.

variables in a two-stage least squares regression. Not surprisingly, the coefficient on price increases and the estimated demand curves for all brand-city-quarter combinations are elastic (the mean of the distribution is -3.38, the median is -3.30 and the standard deviation 0.85). Column (vi) uses a different set of IV's: the proxies for city level marginal costs. The coefficient on price is similar in the two regressions.

The similarity between the estimates of the price coefficient continues to hold when we introduce demographics into the regression. Columns (vii)-(viii) present the results from the previous two sets of IV's, while column (vi) presents an estimation using both sets of instruments jointly. The addition of demographics increases the absolute value of the price coefficient, leading to an increase in the absolute value of the price elasticity. As we recall from the previous section, if there are regional demand shocks then both sets of IV's are not valid. City-specific valuations may be a function of demographics, and if demographics are correlated within a region these valuations will be correlated. Under this story, adding demographics eliminates the omitted-variable bias and improves the over-identification test statistic. The coefficients on demographics capture the change in the value of the cereal relative to the outside option as a function of demographics. The results suggest that the value of cereals increases with income, while age and household size are non-significant. Demographics could potentially be added to the regression in a more complex manner (for example, allowing for interactions with the product characteristics), but since the purpose of the Logit model is mainly descriptive, this is done only in the full model. Finally, column (x) allows for city-specific intercepts, which control even further for city-level demand shocks. The results in this column are again almost identical to the previous results.<sup>20</sup>

---

<sup>20</sup>Furthermore, by adding city fixed effects to the regression we demonstrate that we have enough variation in the time dimension to identify the parameters, and the results are not driven purely by cross-sectional

The first stage  $R$ -squared and  $F$ -statistic for all the instrumental variable regressions are high, suggesting (although not promising) that the IV's have some power. The first-stage regressions are presented in Appendix B. With the exception of the last column, the tests of over-identification are rejected, suggesting that the identifying assumptions are not valid. However, it is unclear whether the large number of observations is the reason for the rejection<sup>21</sup> or that the IV's are not valid.

The regressions also include advertising, which has a statistically significant coefficient. With the exception of column (i) the estimated effect of advertising is roughly the same in all specifications. The large coefficient in column (i) is a result of the correlation between unobserved characteristics and advertising: brands with larger market shares tend to have higher  $\xi_j$ 's and also advertise more. Once we control for this potential endogeneity<sup>22</sup> the mean elasticity with respect to advertising is approximately 0.06, which seems low. A Dorfman-Steiner condition requires advertising elasticities to be an order of magnitude higher. This is probably a result of measurement error in advertising data. Non-linear effects in advertising were also tested and were found to be insignificant.

The price-cost margins implied by the estimates are given in the first column of Table 8. A discussion of these results is deferred to later. The important thing to take from these results is

---

differences.

<sup>21</sup>It is well known that with a large enough sample a  $\chi^2$  test will reject essentially any model.

<sup>22</sup>In the previous sections I have focused my attention to the endogeneity of prices but little was said about the endogeneity of advertising. Conventional wisdom of this industry and these results might cast doubt on this decision. I wish to point out several things. First, advertising varies by brand-quarter, and not by city, thus, potentially is less correlated with the errors. Second, I do not use the advertising coefficient in the analysis below; therefore, as long as bias, if it exists, in this coefficient does not impact the price elasticities there is no effect on the conclusions reached below. Once I add brand fixed effects the IV's used to instrument for price seem to have no effect on the advertising coefficient, suggesting that the opposite might also be true (i.e., that instrumenting for advertising would have little, or no, impact on estimates of price sensitivity).

the similarity between estimates using the two sets of IV's, and the importance of controlling for demographics and heterogeneity. The similarity between the coefficients does not promise the two sets of IV's will produce identical coefficients in different models or that these are valid IV's. However, I believe that with proper control for demographics and heterogeneity, as in the full model, these are valid IV's.

### *5.2 Results from the Full Model*

The estimates of the full model are based on equation (4) and were computed using the procedure described in Appendix A. Predicted market shares are computed using equation (5) and are based on the empirical distribution of demographics (as sampled from the March CPS),<sup>23</sup> independent normal distributions (for  $\nu$ ), and Type I extreme value (for  $\epsilon$ ). The IV's include both average regional prices in all quarters and the cost proxies discussed in the previous section. The results from the preferred specification are presented in Table 6. Additional specifications are discussed and presented in Appendix B.

The means of the distribution of marginal utilities,  $\beta$ 's, are estimated by a minimum-distance procedure described above and presented in the first column. All coefficients are statistically significant and basically of the expected sign. The ability of the observed characteristics to fit the coefficients of the brand dummy variables is measured by using the  $\chi^2$  test, described in Section 4.4, which is presented at the bottom of Table 6. Since the brand dummy variables are estimated very precisely (due to the large number of observations) it is not surprising that the restricted model is rejected.

Estimates of heterogeneity around these means are presented in the next few columns. With the exception of the kids-segment dummy variable, *Kids*, taste parameters standard

---

<sup>23</sup>I sampled 40 individuals for each year, in total 200 for each city.

deviations estimates are insignificant at conventional significance levels, while most interactions with demographics are significant. The interpretation of the estimates is straight forward. For example, the marginal valuation of sogginess increases with age and income. In other words, adults are less sensitive to the crispness of a cereal as are wealthier consumers. The distribution of the *MUSHY* coefficient can be seen in Figure 1; most of the consumers value sogginess in a negative way, but approximately 15% of consumers actually prefer a mushy cereal.

The mean price coefficient is of the same order of magnitude as those presented in Table 5. However, the implied elasticities and margins are different, as discussed below. Coefficients on the interaction of price with demographics are statistically significant. The estimate of the standard deviation is not statistically significant, suggesting that most of the heterogeneity is explained by the demographics (an issue we shall return to below). Older and above-average income consumers tend to be less price sensitive. The distribution of the individual price sensitivity can be seen in Figure 2. It does not seem to be normal, which is a result of the empirical distribution of demographics. In principal, the tail of the distribution can reach positive values – implying that the higher the price the higher the utility. For the given specification the percent of positive price coefficients, given in the last row of the table, is only 0.7%. This is due to flexible interactions with demographics (specifications that don't allow these interactions are presented in Nevo, 1997a, there as much as 13% of the price coefficients are positive.)

As noted above, all the estimates of the standard deviations are statistically insignificant, suggesting that the heterogeneity in the coefficients is mostly explained by the included demographics. A measure of the relative importance of the demographics and random shocks can be obtained from the ratios of the variance explained by the demographics to the total

variation in the distribution of the estimated coefficients; these are over 90%.<sup>24</sup> Appendix B presents the results of a specification that sets the random shocks,  $v_i$ , to zero.

Table 7 presents a sample of estimated own- and cross-price elasticities. Each entry  $i, j$ , where  $i$  indexes row and  $j$  column, gives the elasticity of brand  $i$  with respect to a change in the price of  $j$ . Since the model does not imply a constant elasticity, this matrix will be different depending on what values of the variables are used to evaluate it. Rather than choosing a particular value (say the average, or a value at a particular market), I present the median of each entry over the 1124 markets in the sample. The results are intuitive. For example, Lucky Charms, a kids cereal, is most sensitive to a change in the price of Corn Pops and Froot Loops, also kids cereals. At the same time it is least sensitive to a change in the price of cereals like Corn Flakes, Total or Wheaties, all cereals aimed at different market segments. These substitution patterns are persistent across the table.

An additional diagnostic of how far the results are from the restrictive form imposed by the Logit model is given by examining the variation in the cross-price elasticities in each column. As discussed in Section 2, the Logit restricts all elasticities within a column to be equal. Therefore, an indicator of how well the model has overcome these restrictions is to examine the variation in the estimated elasticities. One such measure is given by examining the ratio of the maximum to the minimum cross-price elasticity (the Logit model implies a ratio of one.) This ratio varies from 21 (Corn Flakes) to 3.5 (Shredded Wheat). Not only does this tell us the results have overcome the Logit restrictions, but more importantly it suggests for which brands

---

<sup>24</sup>Rossi, McCulloch, and Allenby (1996) find that using previous purchasing history helps explain heterogeneity above and beyond what is explained by demographics alone. Berry, Levinsohn and Pakes (1998) reach a similar conclusion using second choice data. The results of this paper do not suggest that previous purchases or second-choices would have no value, they only suggest that the data rejects the assumed normal distribution. This result is not driven by the aggregate data and would probably continue to hold for a number of other parametric distributions (see the results of Kiser, 1996).

the characteristics do not seem strong enough to overcome the restrictions. This test therefore suggests which characteristics we might want to add.<sup>25</sup>

Finally, the bottom row of Table 7 presents the elasticity of the share of the outside good with respect to the price of the "inside" goods. By comparing the ratio of these elasticities to the average in each column we see the relative importance of the outside good to each brand. For example, the cross-price elasticity of the outside good is higher for Kellogg's Corn Flakes than Froot Loops. Not only is it higher in absolute terms, but it is higher as a ratio of the average cross-price elasticity in that column.<sup>26</sup> Once again this is an intuitive result. Private label versions of Kellogg's Corn Flakes are available and have higher shares than generic versions of Froot Loops. All generic products are included in the outside good and therefore it should not be surprising that the outside good is more sensitive to the price of Corn Flakes.

### *5.3 Additional Specifications and a Final Word About Endogeneity*

The previous section presented in detail the preferred specification. Some additional specifications are presented in Appendix B and more can be found in Nevo (1997a). Overall it is important to note that even though these specifications are different in some aspects from the preferred specification the conclusions described in the next section are robust. In addition to the various specifications within the framework used here I also examined the multi-stage demand system, which has recently been used by Hausman, Leonard and Zona (1994) and Hausman (1996). Despite some interesting differences in the pattern of estimated cross-price substitution, the conclusions reached in the next section are unchanged. A full presentation,

---

<sup>25</sup>A formal specification test of the Logit model (in the spirit of Hausman and McFadden, 1984) is the test of the hypothesis that all the non-linear parameters are jointly zero. This test is easily rejected.

<sup>26</sup>Comparing the absolute value of the elasticities across columns is somewhat meaningless, since in each column the absolute price change is different. In order to compare across columns semi-elasticities, or the percent change in market share due to say a 10 cents change in price, need to be computed.

discussion and comparison of the results is beyond the scope of this paper (for details see Nevo, 1997a).

In addition to the work mentioned in the previous paragraph various other authors have also studied the RTE cereal industry. Hausman (1996) explores the value of a new brand of cereal by estimating a multi-level demand system using a weekly panel of brand-level sales and prices in seven cities. His estimation exploits the time variation in the weekly prices to identify the demand parameters. Thus despite the fact that I follow Hausman in using prices in other cities as IV, our estimation strategies are somewhat different. From his results one can estimate the effects computed in the next section. The conclusions are essentially identical. Kiser (1996) and Shum (1998) use household-level rather than aggregate data to estimate demand for cereal. Although these data might also yield inconsistent estimates, the reasons are different than here. Therefore it is encouraging that the estimated own- and cross-price elasticities are very similar to those produced here. All of these studies use different data sets and different identifying assumptions than those used here. However, they all imply similar conclusions, which increases the confidence in the results.

#### *5.4 Price-Cost Margins*

##### *Predicted PCM*

Given the demand parameters estimated in the previous sections, we can use equation (1) to compute PCM for different conduct models. As explained in Section 3.1, I compute PCM for three hypothetical industry structures, thus placing bounds on the importance of the different causes for PCM. Table 8 presents the median PCM for the Logit and the full models using the demand estimates of Tables 5 and 6. Different rows present the PCM that the three models of pricing conduct predict. In principal each brand-city-quarter combination will have a different

predicted margin. The figures in the table are the median of these 27,862 numbers.<sup>27</sup>

Although the mean price sensitivity estimated from the full model, given in Table 6, is similar to the price coefficient estimated in the Logit model, given in Table 5, the implied markups are different. Since the full model does a better job of estimating the cross-price elasticities, it is not surprising that the difference increases as we go from single, to multi-product firms, and then to joint ownership of the 25 brands used in the estimation. For the Logit model we can use the estimates to compute the predicted PCM for brands that were not included in the estimation. Essentially all we need is the price sensitivity, estimated from the sample, and the market shares of additional brands. In the full model we need more information about the additional products, not just their market share, and therefore cannot impute the PCM.

#### *Observed PCM*

In order to determine which model of conduct fits the industry, we need to compare the PCM computed assuming different models of conduct to actual margins. For purpose of comparing observed markups with those predicted by the theory above I have to distinguish between manufacturers and retail margins. I do so by treating the retail margin as an additional cost to producers. This assumption is consistent with a wide variety of models of manufacturers-retailer interaction. Unfortunately, I do not observe actual margins and will have to use crude accounting estimates.<sup>28</sup> These estimates are given in Table 3. This estimate is taken from Cotterill (1996) who is reporting from estimates given in a First Boston Report on the Kellogg Company. Similar estimates can be found in Corts (1996a). The relative comparison for our

---

<sup>27</sup>Medians rather than means are presented to eliminate the sensitivity to outliers. Computing the means of the distribution with the 5% tails truncated yields essentially identical results.

<sup>28</sup>Accounting estimates of marginal costs and PCM are problematic (see for example Fisher and McGowan, 1983). Here I use these estimates only as a crude measure of PCM and also I provide additional information that bounds their magnitude.

purposes is the gross retail margin, estimated at 46.0%. Note, that this margin does not include promotional costs, some of which can be argued to be marginal costs (for example, coupon rebates). For the conclusions below this makes my estimate a conservative one.

The accounting estimates are supported by Census data (presented in Table 2) which, as we saw, are slightly higher because they are average variable costs and can therefore be considered an upper bound to PCM. A lower bound on the margins is the margin between the price of national brands and the corresponding private labels. Using data from Wongtrakool (1994), these margins are approximately 31%. Prices of private labels will be higher than marginal costs for several reasons. First, they also potentially include a markup term, but lower than the national brands. Second, the private label manufacturers might have different marginal costs, most likely higher. For these reasons this margin is only a lower bound on PCM.

### *Testing the Models*

The accounting estimates of marginal costs and the implied margins are a crude estimate for the "typical" brand. Nevertheless, the PCM predicted by the different models are different enough that this crude measure can still be used to separate the different effects. Using the confidence intervals provided in Table 8 we can reject the null hypothesis that either the "typical" margins, presented in Table 3, or the bounds, discussed in the previous section, are equal to those predicted by the model of joint profit maximization for the 25 brands. Furthermore, we cannot reject the null hypothesis that these quantities are consistent with the prediction of the multi-product Nash-Bertrand equilibrium.

One might wonder how restricting the analysis to the top 25 brands alters the results and conclusion. In principal the estimates of price sensitivity should not be biased by this sample selection, and indeed some analysis performed with different samples suggests this is the case.

Therefore, the only potential differences are in the margins computed in Table 8. As previously noted, in order to compute the quantities given in the table for more brands in the full model, these brands have to be part of the sample. Since this is somewhat infeasible I will argue that the likely outcome of including more brands is to strengthen the conclusions. It is more probable that the smaller brands, not included in the sample, have a higher, in absolute value, own-price elasticity (relative to similar brands that are in the sample) and therefore the PCM predicted by the first model will go down. This effect will be completely offset if, rather than giving equal weight to all brands, we weight the observations by market shares (the market-share-weighted mean equivalent of the results in Table 8 are roughly 2-3 percentage points higher, which are the likely effect of including smaller brands). For the other two models there is an additional effect. Including more products in the "inside" goods rather than the "outside" good will tend to increase the predicted PCM. The more products included, the larger the effect, which implies that the effect on the fully collusive model will be larger. An idea of the potential increase can be seen by examining the Logit results. The effects for the full model are likely to be even larger. This implies that the PCM predicted by the multi-product Nash-Bertrand model are likely to be even closer to observed quantities, while the PCM predicted by the collusive model will be even further. In this sense the results of Table 8 are conservative.

There are at least two alternative testing methods that have been previously used in similar situations. First, a strategy that has been successfully used in homogenous-goods industries is to define conduct parameters that measure the degree of competition (see Bresnahan, 1989). In addition to the problems associated with how one should interpret these parameters (see for example Corts, 1999), the identification requirements for this strategy are unlikely to be met in differentiated-product industries (see Nevo 1998b). The second alternative

is to construct a formal test of non-nested hypotheses (for example, see Bresnahan, 1987; or Gasmi, Laffont and Vuong, 1992). These methods require evaluating the likelihood of each model, which can be derived only after making additional assumptions. In particular, I would have to make assumptions on the distribution of the error terms and fully define a supply equation. Not only are both non-trivial assumptions, but based on the data and the unrestricted specification used here there seems to be no natural set of assumptions to make.

## **6. CONCLUSIONS AND EXTENSIONS**

This paper used a random coefficients discrete choice (mixed Logit) model to estimate a brand-level demand system for RTE cereal. Parameter identification exploited the panel structure of the data, and was based on an independence assumption of demand shocks across cities for each brand. The estimates were supported by different identifying assumptions. The estimated elasticities were used to compute price cost margins that would prevail under different conduct models. These different models were tested by comparing the predictions to crude observed measures of margins. A Nash-Bertrand pricing game, played between multi-product firms (as the firms in the industry are), was found to be consistent with observed price-cost margins. Furthermore, it seems that if any significant price collusion existed, the observed margins would have been much higher. If we are willing to accept Nash-Bertrand as a benchmark of non-collusive pricing, we are left to conclude, unlike previous work, that even with PCM greater than 45%, prices in the industry are not a result of collusive behavior.

The results rule out an extreme version of cooperative pricing, one in which all firms jointly maximize profits. There is a continuum of models that were not tested here. For example, the results in the this paper do not rule out cooperative pricing between a subset of products (say Kellogg's and Post Raisin Bran) or producers (say Post and Nabisco). The

methods and test used here could, in principal, deal with these additional models but would require more detailed cost data.

Most economists are familiar with this industry from the research of Schmalensee (1978), which lays out the economic argument at the foundation of the FTC's "shared monopoly" case against the industry in the 1970's. Even though the standard description of the complaint will include a claim of cooperative pricing, the core of the case was brand proliferation and its use as a barrier to entry, not cooperative pricing. As much as I would like to claim that this paper proves or disproves the FTC's case, I cannot do so. I find that the high observed PCM are primarily due to the firms' ability to maintain a portfolio of differentiated brands and influence the perceived quality of these brands by means of advertising. In a sense my analysis suggests that, whether right or wrong, the FTC's claim focused on the important dimensions of competition. In order to make claims regarding the anti-competitive effects of brand introduction and advertising one would have to extend the model to deal with these dimensions explicitly.

Understanding the form of price competition has at least two immediate uses. Structural models of demand and supply have recently gained popularity for analysis of mergers. These models rely on estimates of demand and assumptions about pre- and post-merger equilibrium to predict the effects of a merger. Nevo (1997b) uses the model, data and results of this paper for such an analysis. A different application of the results and methods of this paper is to welfare analysis. For example, Hausman (1996) uses estimates of demand and assumptions about short-run price competition to evaluate the welfare gains from introduction of new goods. The results and conclusions of this paper can be used as arguments for or against the assumptions used in such an analysis.

## REFERENCES

- Berry, S. (1994), "Estimating Discrete-Choice Models of Product Differentiation," *Rand Journal of Economics*, 25, 242-262.
- Berry, S., J. Levinsohn, and A. Pakes (1995), "Automobile Prices in Market Equilibrium," *Econometrica*, 63, 841-890.
- Berry, S., J. Levinsohn, and A. Pakes (1998), "Differentiated Products Demand Systems from a Combination of Micro and Macro Data: The New Car Market," NBER Working Paper no. 6481.
- Bresnahan, T. (1981), "Departures from Marginal-Cost Pricing in the American Automobile Industry," *Journal of Econometrics*, 17, 201-227.
- Bresnahan, T. (1987), "Competition and Collusion in the American Automobile Oligopoly: The 1955 Price War," *Journal of Industrial Economics*, 35, 457-482.
- Bresnahan, T. (1989), "Empirical Methods for Industries with Market Power," in R. Schmalensee and R. Willig, eds., *Handbook of Industrial Organization*, Vol. II, Amsterdam: North-Holland.
- Bresnahan, T., S. Stern, and M. Trajtenberg (1997), "Market Segmentation and the Sources of Rents from Innovation: Personal Computers in the Late 1980's," *RAND Journal of Economics*, 28.
- Bruce, S., and B. Crawford (1995), *Cerealizing America*, Boston: Faber and Faber.
- Cardell, N.S. (1989), *Extensions of the Multinomial Logit: The Hedonic Demand Model, The Non-Independent Logit Model, and the Ranked Logit Model*, Ph.D. Dissertation, Harvard University.
- Chamberlain, G. (1982), "Multi Variate Regression Models for Panel Data," *Journal of*

- Econometrics*, 18(1), 5-46.
- Corts, K.S. (1996a), "The Ready-to-eat Breakfast Cereal Industry in 1994 (A)," Harvard Business School case number N9-795-191.
- Corts, K.S. (1999), "Conduct Parameters and the Measurement of Market Power," *Journal of Econometrics*, 88, 227-250.
- Cotterill, R.W. (1996), "High Cereal Prices and the Prospects for Relief by Expansion of Private Label and Antitrust Enforcement," Testimony offered at the Congressional Forum on the Performance of the Cereal Industry, Washington D.C., March 12.
- Das, S., S. Olley, and A. Pakes (1994), "Evolution of Brand Qualities of Consumer Electronics in the U.S.," mimeo.
- Dubin, J. and D. McFadden (1984), "An Econometric Analysis of Residential Electric Appliance Holding and Consumption," *Econometrica*, 52, 345-362.
- Gasmi, F., J. J. Laffont and Q. Vuong (1992), "Econometric Analysis of Collusive Behavior in a Soft-Drink Market," *Journal of Economics & Strategy*, 1(2), 277-311.
- Fisher, F. M. and J. J. McGowan (1983), "On the Misuse of Accounting Rates of Return to Infer Monopoly Profits," *American Economic Review*, 73, 82-97.
- Fruhan, W.H. (1979), *Financial Strategy: Studies in the Creation, Transfer, and Destruction of Shareholder Value*, Homewood, IL: Irwin.
- Hausman, J. (1983), "Specification and Estimation of Simultaneous Equations Models," in Z. Griliches and M. Intriligator, eds., *Handbook of Econometrics*, Amsterdam: North Holland.
- Hausman, J. and D. McFadden (1984), "Specification Tests for the Multinomial Logit Model," *Econometrica*, 52(5), 1219-1240.

- Hausman, J. (1996), "Valuation of New Goods Under Perfect and Imperfect Competition," in T. Bresnahan and R. Gordon, eds., *The Economics of New Goods*, Studies in Income and Wealth Vol. 58, Chicago: National Bureau of Economic Research.
- Hausman, J., G. Leonard, and J.D. Zona (1994), "Competitive Analysis with Differentiated Products," *Annales D'Economie et de Statistique*, 34, 159-80.
- Hausman, J., and D. Wise (1978), "A Conditional Probit Model for Qualitative Choice: Discrete Decisions Recognizing Interdependence and Heterogeneous Preferences," *Econometrica*, 49, 403-26.
- Hendel, I. (1998), "Estimating Multiple Discrete Choice Models: An Application to Computerization Returns," forthcoming *Review of Economic Studies*.
- Kiser, E. K. (1996), "Heterogeneity in Price Sensitivity: Implications for Price Discrimination," mimeo, University of Wisconsin-Madison.
- McFadden, D. (1973), "Conditional Logit Analysis of Qualitative Choice Behavior," in P. Zarembka, eds., *Frontiers of Econometrics*, New York, Academic Press.
- McFadden, D. (1978), "Modeling the Choice of Residential Location," in A. Karlqvist, et al., eds., *Spatial Interaction Theory and Planning Models*, Amsterdam: North-Holland.
- McFadden, D. (1981), "Econometric Models of Probabilistic Choice," in C. Manski and D. McFadden, eds., *Structural Analysis of Discrete Data*, pp. 198-272, Cambridge: MIT Press.
- McFadden, D. and K. Train (1997), "Mixed MNL Models for Discrete Response," University of California at Berkeley, mimeo.
- Mueller, D.C. (1986), *Profits in the Long Run*, Cambridge: Cambridge University Press.
- Nevo, A. (1997a), *Demand for Ready-to-Eat Cereal and Its Implications for Price Competition*,

- Merger Analysis, and Valuation of New Goods*, Ph.D. Dissertation, Harvard University.
- Nevo, A. (1997b), "Mergers with Differentiated Products: The Case of Ready-to-Eat Cereal," University of California at Berkeley, mimeo (available <http://emlab.berkeley.edu/~nevo>).
- Nevo, A. (1998a), "A Research Assistant's Guide to Random Coefficients Discrete Choice Models of Demand," NBER Technical Paper no. 221 (an updated version and computer code available at <http://emlab.berkeley.edu/~nevo>).
- Nevo, A. (1998b), "Identification of the Oligopoly Solution Concept in a Differentiated-Products Industry," *Economics Letters*, 59, 391-395.
- Nevo, A. and C. Wolfram (1999), "Prices and Coupons for Breakfast Cereals," NBER Working Paper no. 6932.
- Rossi, P., R.E. McCulloch, and G.M. Allenby (1996), "The Value of Purchase History Data in Target Marketing," *Marketing Science*, 15(4), 321-40.
- Scherer, F., M. (1982), "The Breakfast Cereal Industry," in W. Adams, ed., *The Structure of American Industry*, New York: Macmillan.
- Schmalensee, R. (1978), "Entry Deterrence in the Ready-to-Eat Breakfast Cereal Industry," *Bell Journal of Economics*, 9, 305-327.
- Shum, M. (1998), "Does Advertising Substitute for Experience? Evidence from the Breakfast Cereal Market," University of Toronto, mimeo.
- Wongtrakool, B. (1994), "An Assessment of the 'Cereal Killers': Private Labels in the Ready-to-eat Cereal Industry," Senior Thesis, Harvard University.

## APPENDIX A: DATA AND ESTIMATION DETAILS

### *Data*

The data described in Section 4 were obtained from various sources. Quantity and price data were obtained from the Food Marketing Policy Center at the University of Connecticut. These data were collected by Information Resources, Inc. (IRI), a marketing firm in Chicago, using scanning devices in a national random sample of supermarkets located in various metropolitan areas and rural towns. Weekly data for UPC-coded products are drawn from a sample which represents the universe of supermarkets with annual sales of more than \$2 million dollars, accounting for 82% of grocery sales in the US. In most cities the sample covers more than 20% of the relevant population, and due to the importance of the sample to its customers, IRI makes an effort to make the sample representative. This is confirmed by unpublished analysis conducted by the BLS.

Market shares are defined by converting volume sales into number of servings sold,<sup>29</sup> and dividing by the total potential number of servings in a city in a quarter. This potential was assumed to be one serving per capita per day. The market share of the outside good was defined as the difference between one and the sum of the inside goods market shares. A price variable was created by dividing the dollar sales by the number of servings sold, and was deflated using a regional urban consumers CPI. The dollar sales reflect the price paid by consumers at the register, generating an average real per-serving transaction price. However, the sales data does not account for any manufacturers coupons.

Advertising data was taken from the Leading National Advertising data base, which contains quarterly national advertising expenditures by brand collected from 10 media sources.<sup>30</sup> I used the total of the 10 types of media.

Product characteristics were collected in local supermarkets by examining cereal boxes. This implicitly assumes that the characteristics have not changed since 1988. Although this is not exactly true, it seems a reasonable first approximation. Each cereal was classified into "mushy" or not, depending on its soginess in milk.<sup>31</sup>

Information on the distribution of demographics was obtained by sampling individuals from the March Current Population Survey for each year. I sampled 50 draws for each city in each year. Individual income was obtained by dividing household income by the size of the household. The variable *Child* was defined as a dummy variable which equals one if age is less than sixteen. The national averages obtained here are representative of Census statistics. However, the statistics on city-level demographics do not exactly match the analogous statistics from Census data. This is due to the small sample size, and will have to be accounted in the estimation as an additional source of variation.

Finally, instrumental variables were constructed using two additional data sources. An

---

<sup>29</sup>This was done by using the serving weight suggested by the manufacturer, which are assumed correct (or at least proportional to the "true" serving weight).

<sup>30</sup>The sources include: magazines, Sunday magazines, newspapers, outdoor, network television, spot television, syndicated television, cable networks, network radio and national spot radio.

<sup>31</sup>I wish to thank Sandy Black for suggesting this variable and helping me classify the various brands.

average of wages paid in the supermarket sector in each city was constructed from the NBER CPS Monthly Earning Extracts. Estimates of city density were taken from the BLS, as were regional price indices.

The brands used in the analysis are given in Table A1 and summary statistics for the variables used are given in Table A2

### Estimation

Let  $Z = [z_1, \dots, z_M]$  be a set of instruments such that

$$(A-1) \quad E[Z' \cdot \omega(\theta^*)] = 0,$$

where  $\omega$ , a function of the model parameters, is an error term defined below and  $\theta^*$  denotes the true value of these parameters. The GMM estimate is

$$(A-2) \quad \hat{\theta} = \underset{\theta}{\operatorname{argmin}} \omega(\theta)' Z A^{-1} Z' \omega(\theta),$$

where  $A$  is a consistent estimate of  $E[Z' \omega \omega' Z]$ . Following Berry(1994), I define the error term by solving for the mean utility levels,  $\delta_{jt}$ , that solve the implicit system of equations

$$(A-3) \quad s_{jt}(x, p_{jt}, \delta_{jt}; \theta_2) = S_{jt},$$

where  $s_{jt}(\cdot)$  is the market share function defined by equation (5), and  $S_{jt}$  are the observed market shares. For the Logit model the solution,  $\delta_{jt}(x, p_{jt}, S_{jt}; \theta_2)$ , is equal to  $\ln(S_{jt}) - \ln(S_{0jt})$ , while for the full model this inversion is done numerically. Once this inversion has been done, the error term is defined as

$$(A-4) \quad \omega_{jt} = \delta_{jt}(x, p_{jt}, S_{jt}; \theta_2) - (x_j \beta + \alpha p_{jt}).$$

If we want to include brand, time or city variables they would also be included in the right hand side. We can now see the reason for distinguishing between  $\theta_1$  and  $\theta_2$ :  $\theta_1$  enters this term, and the GMM objective function, in a linear fashion, while  $\theta_2$  enters non-linearly.

If brand fixed effects are not included the error term, as defined by equation (A-4), is the unobserved product characteristic,  $\xi_{jt}$ . However, due to the richness of my data I am able to include brand-specific dummy variables as product characteristics. These dummy variables include both the mean quality index of observed characteristics,  $\beta x_j$ , and the unobserved characteristics,  $\xi_{jt}$ . Thus, the error term is the city-quarter specific deviation from the mean valuation, i.e.,  $\Delta \xi_{jt}$ . The inclusion of brand dummy variables introduce a challenge in estimating the taste parameters,  $\beta$ , which was dealt with in Section 4.4.

In the Logit model, with the appropriate choice of a weight matrix,<sup>32</sup> this procedure simplifies to two-stage least squares regression of  $\ln(S_{jt}) - \ln(S_{0jt})$ . In the full random coefficients model, both the computation of the market shares, and the "inversion" in order to get  $\delta_{jt}(\cdot)$ , have to be done numerically. The value of the estimate in equation (A-2) is then computed using a non-linear search. This search is simplified in two ways. First, the first-order conditions of the minimization problem defined in equation (A-2) with respect to  $\theta_1$  are linear in these parameters. Therefore, these linear parameters can be solved for (as a function of the other parameters) and plugged into the rest of the first-order conditions, limiting the non-linear search to only the non-linear parameters. Second, the results in the paper were computed using a Quasi-

<sup>32</sup>I.e.,  $A = Z'Z$ , which is the "optimal" weight matrix under the assumption of homoscedasticity.

Newton method with a user supplied gradient. This was found to work much faster than the Nelder-Mead non derivative simplex search method used by BLP. For details of the computation algorithm, including a MATLAB computer code, see Nevo (1998a).

### **APPENDIX B: ADDITIONAL REGRESSIONS**

This Appendix presents some additional results. Table B1 presents the first stage regressions that generated the results presented in Table 5. The columns are labeled to match those of Table 5. Table B2 presents some additional specifications. The first column presents the estimates from the preferred specification setting the unobserved shocks,  $v_i$ 's, to zero for some of the characteristics. The estimates are essentially unchanged, as are the estimated margins, which are presented at the bottom of the table. This similarity continues to hold if I set the unobserved shocks to zero for all characteristics; thus, supporting the claim made in the text that the heterogeneity is driven by the demographics and not the random shocks.

Columns (ii)-(iv) are the full model version of columns (i), (iii) and (iv) of Table 5. Column (ii) and (iii) are NLLS estimates of the full model not including and including brand dummy variables as characteristics, respectively. The specification in column (iv) does not include the brand dummies in the demand but uses them as IV. As explained in the text this for these data it is the equivalent of using brand characteristics as IV's. The mean of the price sensitivity is almost identical to that presented in Table 5, but the estimates suggest a wide dispersion around this mean, especially for the estimates that do not include the brand dummy variables in the demand (see the large percentage of price coefficients greater than zero). The results in the last column are estimated very imprecisely, which is not surprising given that I did not use any of the variance reducing methods employed by BLP.

I also examined specifications, equivalent to those presented in Table 5 column (x), which include city specific intercepts. The point estimates are close to those of the preferred specification but the standard errors are very large, which is not surprising given that demographics are approximately constant during the sample period.

TABLE 1  
VOLUME MARKET SHARES

	88Q1	88Q4	89Q4	90Q4	91Q4	92Q4
Kellogg	41.39	39.91	38.49	37.86	37.48	33.70
General Mills	22.04	22.30	23.60	23.82	25.33	26.83
Post	11.80	10.30	9.45	10.96	11.37	11.31
Quaker Oats	9.93	9.00	8.29	7.66	7.00	7.40
Ralston	4.86	6.37	7.65	6.60	5.45	5.18
Nabisco	5.32	6.01	4.46	3.75	2.95	3.11
C3	75.23	72.51	71.54	72.64	74.18	71.84
C6	95.34	93.89	91.94	90.65	89.58	87.53
Private Label	3.33	3.75	4.63	6.29	7.13	7.60

Source: IRI Infoscan Data Base, University of Connecticut, Food Marketing Center.

TABLE 2  
AGGREGATE ESTIMATES OF PRODUCTION COSTS

Item	RTE Cereal (SIC 2043)		All Food Industries (SIC 20)	
	M\$	% of value	M\$	% of value
Value of Shipments	8,211	100.0	371,246	100.0
Materials	2,179	26.5	235,306	63.4
Labor	677	8.2	32,840	8.8
Energy	76	0.9	4,882	1.3
Gross Margin		64.4		26.5

Source: Annual Survey of Manufacturers 1988-1992.

TABLE 3  
DETAILED ESTIMATES OF PRODUCTION COSTS

Item	\$/lb	% of mfr price	% of retail price
Manufacturer Price	2.40	100.0	80.0
Manufacturing Cost:	1.02	42.5	34.0
Grain	0.16	6.7	5.3
Other Ingredients	0.20	8.3	6.7
Packaging	0.28	11.7	9.3
Labor	0.15	6.3	5.0
Manufacturing Costs (net of capital costs)*	0.23	9.6	7.6
Gross Margin		57.5	46.0
Marketing Expenses:	0.90	37.5	30.0
Advertising	0.31	13.0	10.3
Consumer Promo (mfr coupons)	0.35	14.5	11.7
Trade Promo (retail in-store)	0.24	10.0	8.0
Operating Profits	0.48	20.0	16.0

\*Capital costs were computed from ASM data.

Source: Cotterill (1996) reporting from estimates in CS First Boston Reports "Kellogg Company," New York, October 25, 1994.

TABLE 4  
PRICES AND MARKET SHARES OF BRANDS IN SAMPLE

Description	Mean	Median	Std	Min	Max	Brand Variation	City Variation	Quarter Variation
Prices (¢ per serving)	19.4	18.9	4.8	7.6	40.9	88.4%	5.3%	1.6%
Advertising (M\$ per quarter)	3.56	3.04	2.03	0	9.95	66.2%	--	1.8%
Share within Cereal Market (%)	2.2	1.6	1.6	0.1	11.6	82.3%	0.5%	0%

Source: IRI Infoscan Data Base, University of Connecticut, Food Marketing Center.

TABLE 5  
RESULTS FROM LOGIT DEMAND

Variable	OLS			IV						
	(i)	(ii)	(iii)	(iv)	(v)	(vi)	(vii)	(viii)	(ix)	(x)
Price	-4.96 (0.10)	-7.26 (0.16)	-7.97 (0.15)	-8.17 (0.11)	-17.57 (0.50)	-17.12 (0.49)	-22.56 (0.51)	-23.77 (0.53)	-23.37 (0.47)	-23.07 (1.17)
Advertising	0.158 (0.002)	0.026 (0.002)	0.026 (0.002)	0.157 (0.002)	0.020 (0.002)	0.020 (0.002)	0.018 (0.002)	0.017 (0.002)	0.018 (0.002)	0.013 (0.002)
log of median income	-	-	0.89 (0.02)	-	-	-	1.06 (0.02)	1.13 (0.02)	1.12 (0.02)	-
log of median age	-	-	-0.423 (0.052)	-	-	-	-0.063 (0.059)	0.003 (0.062)	-0.007 (0.061)	-
median HH size	-	-	-0.126 (0.027)	-	-	-	-0.053 (0.029)	-0.036 (0.031)	-0.038 (0.031)	-
Measures of Fit: <sup>a</sup>	0.54	0.72	0.74	436.9 (26.30)	168.5 (30.14)	181.2 (16.92)	83.96 (30.14)	82.95 (16.92)	85.87 (42.56)	15.06 (42.56)
1 <sup>st</sup> Stage R <sup>2</sup>	-	-	-	0.889	0.908	0.908	0.910	0.909	0.913	0.952
1 <sup>st</sup> Stage F-test	-	-	-	5119	124	288	129	291	144	180
Instruments: <sup>b</sup>	-	-	-	brand dummies	prices	cost	prices	cost	prices, cost	prices, cost

Dependant variable is  $\ln(S_{jt}) - \ln(S_{0t})$ . Based on 27,862 observations. All regressions include time dummy variables, and with the exception of columns (i) and (iv), all regressions also include brand dummy variables. The regressions in columns (i) and (iv) include product characteristics (calories from fat, sugar, fiber, mushy and segment dummy variables), see text for reported coefficients. The regression in column (x) includes city dummy variables. Asymptotically robust s.e. are reported in parentheses.

<sup>a</sup>Adjusted R<sup>2</sup> for the OLS regression, and a test of over identification for the IV regressions (Hausman, 1983) with the 0.95 critical values in parenthesis.

<sup>b</sup>Prices denote the average regional price of the brand, cost denotes cost proxies, both are described in the text.

TABLE 6  
RESULTS FROM THE FULL MODEL

Variable	Means ( $\beta$ 's)	Standard Deviations ( $\sigma$ 's)	Interactions with Demographic Variables:			
			Income	Income Sq	Age	Child
Price	-27.198 (5.248)	2.453 (2.978)	315.894 (110.385)	-18.200 (5.914)	-	7.634 (2.238)
Advertising	0.020 (0.005)	-	-	-	-	-
Constant	-3.592 <sup>a</sup> (0.138)	0.330 (0.609)	5.482 (1.504)	-	0.204 (0.341)	-
Cal from Fat	1.146 <sup>a</sup> (0.128)	1.624 (2.809)	-	-	-	-
Sugar	5.742 <sup>a</sup> (0.581)	1.661 (5.866)	-24.931 (9.167)	-	5.105 (3.418)	-
Mushy	-0.565 <sup>a</sup> (0.052)	0.244 (0.623)	1.265 (0.737)	-	0.809 (0.385)	-
Fiber	1.627 <sup>a</sup> (0.263)	0.195 (3.541)	-	-	-	-0.110 (0.0513)
All-family	0.781 <sup>a</sup> (0.075)	0.1330 (1.365)	-	-	-	-
Kids	1.021 <sup>a</sup> (0.168)	2.031 (0.448)	-	-	-	-
Adults	1.972 <sup>a</sup> (0.186)	0.247 (1.636)	--	--	-	-
GMM Objective (degrees of freedom)			5.05 (8)			
MD $\chi^2$			3472.3			
% of Price Coefficients >0			0.7			

Based on 27,862 observations. Except where noted, parameters are GMM estimates. All regressions include brand and time dummy variables. Asymptotically robust standard errors are given in parentheses.

<sup>a</sup> Estimates from a minimum-distance procedure.

TABLE 7  
MEDIAN OWN AND CROSS-PRICE ELASTICITIES

#	Brand	Corn Flakes	Frosted Flakes	Rice Krispies	Froot Loops	Cheerios	Total	Lucky Charms	P Raisin Bran	CapN Crunch	Shredded Wheat
1	K Corn Flakes	-3.379	0.212	0.197	0.014	0.202	0.097	0.012	0.013	0.038	0.028
2	K Raisin Bran	0.036	0.046	0.079	0.043	0.145	0.043	0.037	0.057	0.050	0.040
3	K Frosted Flakes	0.151	-3.137	0.105	0.069	0.129	0.079	0.061	0.013	0.138	0.023
4	K Rice Krispies	0.195	0.144	-3.231	0.031	0.241	0.087	0.026	0.031	0.055	0.046
5	K Frosted Mini Wheats	0.014	0.024	0.052	0.043	0.105	0.028	0.038	0.054	0.045	0.033
6	K Froot Loops	0.019	0.131	0.042	-2.340	0.072	0.025	0.107	0.027	0.149	0.020
7	K Special K	0.114	0.124	0.105	0.021	0.153	0.151	0.019	0.021	0.035	0.035
8	K Crispix	0.077	0.086	0.114	0.034	0.181	0.085	0.030	0.037	0.048	0.043
9	K Corn Pops	0.013	0.109	0.034	0.113	0.058	0.025	0.098	0.024	0.127	0.016
10	GM Cheerios	0.127	0.111	0.152	0.034	-3.663	0.085	0.030	0.037	0.056	0.050
11	GM Honey Nut Cheerios	0.033	0.192	0.058	0.123	0.094	0.034	0.107	0.026	0.162	0.024
12	GM Wheaties	0.242	0.169	0.175	0.025	0.240	0.113	0.021	0.026	0.050	0.043
13	GM Total	0.096	0.108	0.087	0.018	0.131	-2.889	0.017	0.017	0.029	0.029
14	GM Lucky Charms	0.019	0.131	0.041	0.124	0.073	0.026	-2.536	0.027	0.147	0.020
15	GM Trix	0.012	0.103	0.031	0.109	0.056	0.026	0.096	0.024	0.123	0.016
16	GM Raisin Nut	0.013	0.025	0.042	0.035	0.089	0.040	0.031	0.046	0.036	0.027
17	GM Cinnamon Toast Crunch	0.026	0.164	0.049	0.119	0.089	0.035	0.102	0.026	0.151	0.022
18	GM Kix	0.050	0.279	0.070	0.101	0.106	0.056	0.088	0.020	0.149	0.025
19	P Raisin Bran	0.027	0.037	0.068	0.044	0.127	0.035	0.038	-2.496	0.049	0.036
20	P Grape Nuts	0.037	0.049	0.088	0.042	0.165	0.050	0.037	0.051	0.052	0.047
21	P Honey Bunches of Oats	0.100	0.098	0.104	0.022	0.172	0.109	0.020	0.024	0.038	0.033
22	Q 100% Natural	0.013	0.021	0.046	0.042	0.103	0.029	0.036	0.052	0.046	0.029
23	Q Life	0.077	0.328	0.091	0.114	0.137	0.046	0.096	0.023	0.182	0.029
24	Q CapNCrunch	0.043	0.218	0.064	0.124	0.101	0.034	0.106	0.026	-2.277	0.024
25	N Shredded Wheat	0.076	0.082	0.124	0.037	0.210	0.076	0.034	0.044	0.054	-4.252
26	Outside good	0.141	0.078	0.084	0.022	0.104	0.041	0.018	0.021	0.033	0.021

Cell entries  $i, j$ , where  $i$  indexes row and  $j$  column, give the percent change in market share of brand  $i$  with a one percent change in price of  $j$ . Each entry represents the median of the elasticities from the 1124 markets.

TABLE 8  
MEDIAN MARGINS

	Logit (Table 5 column ix)	Full Model (Table 6)
Single Product Firms	33.6% (31.8% - 35.6%)	35.8% (24.4% - 46.4%)
Current Ownership of 25 Brands	35.8% (33.9% - 38.0%)	42.2% (29.1% - 55.8%)
Joint Ownership of 25 Brands	41.9% (39.7% - 44.4%)	72.6% (62.2% - 97.2%)
Current Ownership of All Brands	37.2% (35.2% - 39.4%)	-
Monopoly/Perfect Price Collusion	54.0% (51.1% - 57.3%)	-

Margins are defined as  $(p-mc)/p$ . Presented are medians of the distribution of 27,862 (brand-city-quarter) observations. 95% confidence intervals for these medians are reported in parentheses based on the asymptotic distribution of the estimated demand coefficients. For the Logit model the computation is analytical, while for the full model the computation is based on 1,500 draws from this distribution.

FIGURE 1  
 FREQUENCY DISTRIBUTION OF TASTE FOR SOGGINESS  
 (BASED ON TABLE 6)

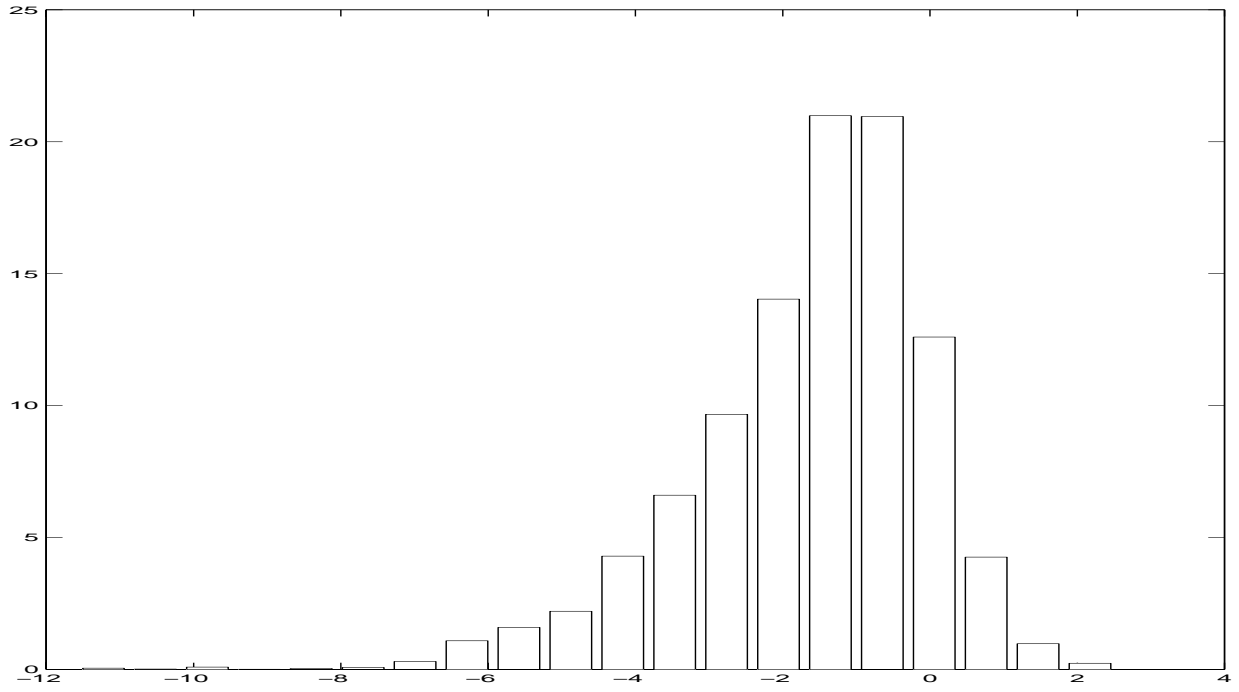


FIGURE 2  
 FREQUENCY DISTRIBUTION OF PRICE COEFFICIENT  
 (BASED ON TABLE 6)

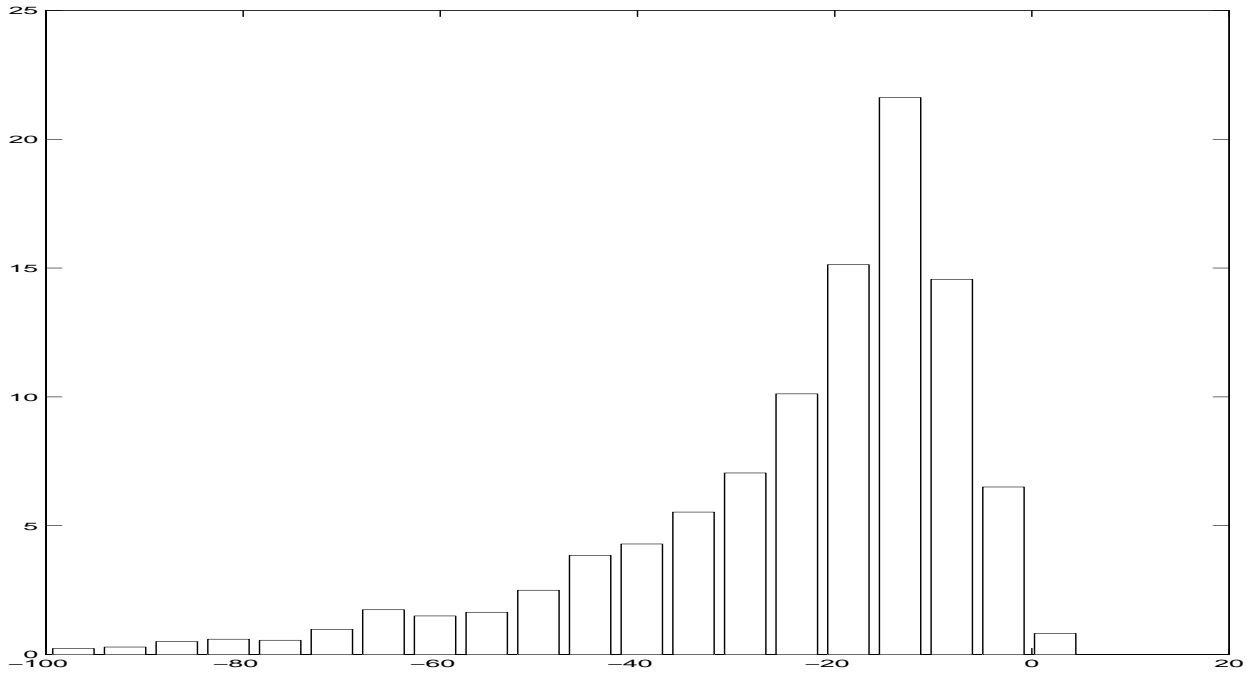


TABLE A1  
BRANDS USED FOR ESTIMATING DEMAND

All Family/ Basic Segment	Taste Enhanced Wholesome Segment	Simple Health Nutrition Segment	Kids Segment
K Corn Flakes	K Frosted Mini Wheats	K Special K	K Corn Pops
K Crispix	K Raisin Bran	GM Total	K Froot Loops
K Rice Krispies	GM Raisin Nut	P Grape Nuts	K Frosted Flakes
GM Cheerios	P Honey Bunches of Oats	N Shredded Wheat	GM Cinn Toast Crunch
GM Wheaties	P Raisin Bran		GM Honey Nut Cheerios
	Q 100% Natural		GM Kix
			GM Lucky Charms
			GM Trix
			Q CapN Crunch
			Q Life

TABLE A2  
SAMPLE STATISTICS

Description	Mean	Median	Std	Min	Max
Calories	137.6	120	36.32	110	220
Fat Calories (/100)	0.124	0.100	0.139	0	0.60
Sodium (% RDA/100)	0.087	0.090	0.042	0	0.150
Fiber (% RDA/100)	0.095	0.050	0.094	0	0.310
Sugar (g/100)	0.084	0.070	0.060	0	0.200
Mushy (=1 if cereal gets soggy in milk)	0.35	--	--	0	1
Serving weight (g)	35.1	30	9.81	25	58
Income (\$)	13,083	10,475	11,182	14	275,372
Age (years)	29.99	28	23.14	1	90
Child (=1 if age<16)	0.23	--	--	0	1

Source: Cereal boxes and samples from the CPS.

TABLE B1  
1<sup>ST</sup> STAGE RESULTS

Variable	(v)		(vi)		(vii)		(viii)		(ix)		(x)	
	Est.	s.e.	Est.	s.e.	Est.	s.e.	Est.	s.e.	Est.	s.e.	Est.	s.e.
avgp924	0.263	0.025	-		0.233	0.025	-		0.266	0.025	0.150	0.019
avgp923	0.088	0.029	-		0.063	0.029	-		0.066	0.029	0.036	0.022
avgp922	-0.096	0.028	-		-0.063	0.028	-		-0.084	0.028	0.039	0.021
avgp921	0.029	0.028	-		0.100	0.028	-		0.121	0.028	0.195	0.022
avgp914	-0.142	0.028	-		-0.178	0.028	-		-0.201	0.028	-0.052	0.022
avgp913	-0.452	0.041	-		-0.431	0.041	-		-0.477	0.041	-0.164	0.032
avgp912	0.401	0.037	-		0.415	0.037	-		0.363	0.037	0.115	0.028
avgp911	-0.231	0.047	-		-0.329	0.046	-		-0.295	0.046	-0.127	0.036
avgp904	0.052	0.048	-		0.181	0.048	-		0.333	0.048	0.096	0.037
avgp903	-0.215	0.053	-		-0.172	0.052	-		-0.187	0.052	-0.111	0.039
avgp902	0.129	0.042	-		0.120	0.041	-		0.031	0.041	0.009	0.031
avgp901	0.366	0.037	-		0.329	0.037	-		0.352	0.037	0.254	0.028
avgp894	-0.277	0.030	-		-0.266	0.030	-		-0.225	0.030	-0.084	0.022
avgp893	0.291	0.040	-		0.241	0.040	-		0.143	0.040	0.027	0.030
avgp892	-0.026	0.042	-		0.048	0.042	-		0.036	0.042	0.043	0.032
avgp891	-0.098	0.031	-		-0.134	0.031	-		-0.061	0.031	-0.058	0.024
avgp884	0.031	0.040	-		0.088	0.040	-		0.186	0.040	0.059	0.030
avgp883	-0.268	0.047	-		-0.272	0.047	-		-0.348	0.047	-0.069	0.035
avgp882	-0.220	0.044	-		-0.264	0.043	-		-0.221	0.043	-0.106	0.033
avgp881	0.536	0.040	-		0.528	0.040	-		0.468	0.040	0.206	0.030
density	-		0.152	0.017	-		0.146	0.018	0.305	0.019	0.209	0.010
wages	-		0.172	0.023	-		0.196	0.023	0.182	0.023	0.046	0.018
R <sup>2</sup>	0.908		0.908		0.910		0.909		0.913		0.952	
F-test	124		288		129		291		144		180	

Column headings are equivalent to those of Table 5. All regressions also include the exogenous variables included in the equivalent columns of Table 5, as well as regional dummy variables. The row labeled *F-test* displays the value of the test statistic for the null hypothesis that coefficients of all variables excluded from the demand are zero.

TABLE B2  
ADDITIONAL RESULTS FROM THE FULL MODEL

		(i)		(ii)		(iii)		(iv)	
Variable		Est.	s.e	Est.	s.e	Est.	s.e	Est.	s.e
Means ( $\beta$ 's)	Price	-25.595	2.673	-4.291	0.143	-7.407	0.164	-9.856	3.039
	Advertising	0.022	0.004	0.171	0.002	0.027	0.002	0.180	0.016
	Constant	-4.265 <sup>a</sup>	0.074	-3.220	0.040	-3.706 <sup>a</sup>	0.027	-5.663	2.376
	Fat Cal	0.716 <sup>a</sup>	0.112	-0.398	0.035	-0.037 <sup>a</sup>	0.026	-0.100	0.174
	Sugar	10.344 <sup>a</sup>	0.434	2.761	0.110	2.453 <sup>a</sup>	0.078	-4.004	3.243
	Mushy	-0.325 <sup>a</sup>	0.031	-0.181	0.011	-0.004 <sup>a</sup>	0.007	-12.774	5.350
	Fiber	1.880 <sup>a</sup>	0.126	0.180	0.063	0.608 <sup>a</sup>	0.044	0.557	1.964
	All-family	0.935 <sup>a</sup>	0.069	0.242	0.021	0.488 <sup>a</sup>	0.014	-0.913	0.613
	Kids	-0.044 <sup>a</sup>	0.136	0.187	0.018	0.411 <sup>a</sup>	0.012	0.106	0.581
	Adults	1.194 <sup>a</sup>	0.175	0.134	0.018	0.352 <sup>a</sup>	0.013	-0.343	0.747
Standard Deviations ( $\sigma$ 's)	Price	-		0.153	0.064	0.124	0.053	1.757	6.479
	Constant	-		0.036	0.013	0.029	0.011	0.580	1.515
	Fat Cal	1.427	2.928	0.087	0.071	0.094	0.068	0.035	6.703
	Sugar	-		0.296	0.119	0.342	0.098	3.962	12.613
	Mushy	-		0.006	0.020	0.024	0.016	15.071	5.377
	Fiber	-		0.028	0.093	0.086	0.075	3.057	5.824
	All-family	0.144	0.988	0.006	0.031	0.015	0.023	2.551	0.911
	Kids	1.888	0.275	0.009	0.019	0.007	0.017	1.067	2.212
Adults	0.304	0.893	0.042	0.028	0.024	0.025	1.339	0.965	
Interaction w\ Income	Price	311.101	61.797	34.565	1.455	8.552	0.974	21.575	96.912
	Constant	4.786	1.078	-2.027	0.041	-0.187	0.040	-0.913	3.484
	Sugar	-29.449	6.581	-5.013	0.221	-2.334	0.172	-12.035	9.658
	Mushy	0.817	0.594	0.653	0.023	0.011	0.020	0.021	6.452
Interaction w\ Income <sup>2</sup>	Price	-17.610	3.217	-1.206	0.072	-0.312	0.050	-1.075	5.741
Interaction w\ Age	Constant	0.208	0.215	0.060	0.035	0.055	0.026	5.794	0.988
	Sugar	3.949	2.501	-0.696	0.253	-0.045	0.202	6.133	12.380
	Mushy	-0.805	0.256	0.165	0.031	0.083	0.024	-3.380	2.563
Interaction w\ Child	Price	5.158	1.813	1.011	0.315	1.633	0.248	42.207	13.993
	Fiber	-4.909	3.316	1.256	0.334	0.563	0.261	-4.692	8.648
% of Price Coefficients >0		0		16.1		0		22.4	
single-product PCM		36.1%		67.6%		75.7%		48.2%	
multi-product PCM		41.9%		75.6%		84.5%		54.0%	
collusive PCM		67.4%		103.9%		117.6%		88.9%	

Based on 27,862 observations. Except where noted, parameters are GMM estimates. The different columns present results from: (i) the preferred specification without  $v_i$ 's for those characteristics that have other interactions; (ii) NLLS w/o brand dummy variables in the demand; (iii) NLLS for preferred specification; (iv) GMM using brand dummy variables as IV's.